



# ArchiMate 3.1 certification

Interoperability tests

ArchiMate Open Exchange Format 3.1 import /  
export tests

**MEGA Product Ownership**

Q4 2020

## Contents

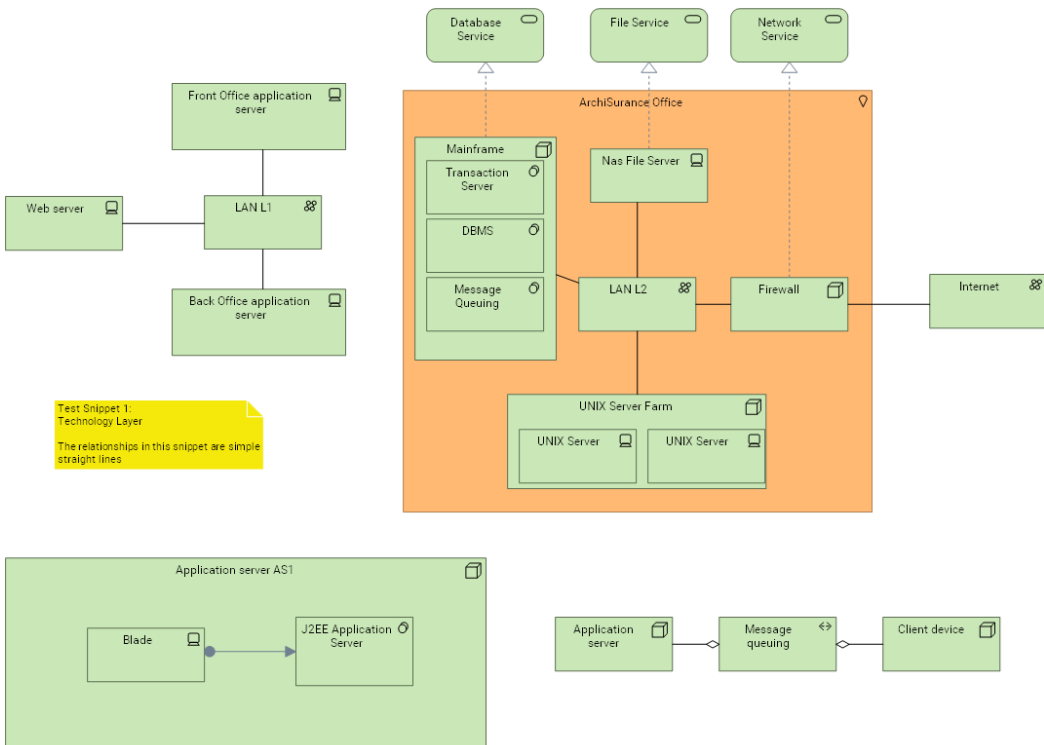
|   |           |
|---|-----------|
| <b>1. Snippets import test .....</b>                  | <b>4</b>  |
| 1.1. Interoperability testing snippet-1.xml .....     | 4         |
| 1.2. Interoperability testing snippet-2.xml .....     | 5         |
| 1.3. Interoperability testing snippet-3.xml .....     | 6         |
| 1.4. Interoperability testing snippet-4.xml .....     | 7         |
| 1.5. Interoperability testing snippet-5.xml .....     | 8         |
| 1.6. Interoperability testing snippet-6.xml .....     | 9         |
| 1.7. Interoperability testing snippet-7.xml .....     | 10        |
| 1.8. Interoperability testing snippet-8.xml .....     | 11        |
| 1.9. Interoperability testing snippet-9.xml .....     | 12        |
| 1.10. Interoperability testing snippet-10.xml .....   | 13        |
| <b>2. Other ArchiMate Tools Import tests .....</b>    | <b>14</b> |
| 2.1. Import from BOC AdoIT .....                      | 14        |
| 2.1.1. 01 technology layer .....                      | 14        |
| 2.1.2. 02 motivation elements .....                   | 14        |
| 2.1.3. 03 Strategy Layer .....                        | 15        |
| 2.1.4. 04 – business layer .....                      | 15        |
| 2.1.5. 05 – Application Layer .....                   | 16        |
| 2.1.6. 06 implementation and migration element .....  | 16        |
| 2.1.7. 07- physical elements .....                    | 17        |
| 2.1.8. 08 - Cross layer .....                         | 17        |
| 2.1.9. 10 – All relationships plus 3.1 features ..... | 18        |
| 2.2. Import from OBEO Smart EA .....                  | 19        |
| <b>3. Export test to Other ArchiMate Tools .....</b>  | <b>28</b> |
| 3.1. Export to Archi 4.6 .....                        | 28        |
| 3.1.1. All elements .....                             | 28        |
| 3.1.2. Motivation .....                               | 28        |
| 3.1.3. Strategy .....                                 | 29        |
| 3.1.4. Business .....                                 | 29        |
| 3.1.5. Application .....                              | 29        |
| 3.1.6. Technology .....                               | 30        |
| 3.1.7. Physical .....                                 | 30        |
| 3.1.8. Implementation & migration .....               | 30        |
| 3.1.9. Cross layer Business / Application .....       | 31        |
| 3.1.10. Cross layer Application / Technology .....    | 31        |
| 3.1.11. Cross Layer Business / Technology .....       | 31        |
| 3.1.12. All Relationships .....                       | 31        |
| 3.1.13. Derived Relationship .....                    | 32        |
| 3.2. Export to Modelio 4.1 .....                      | 33        |
| 3.2.1. All Elements .....                             | 33        |
| 3.2.2. Motivation .....                               | 33        |

|   |           |
|---|-----------|
| <b>3.2.3. Strategy</b> .....                              | <b>34</b> |
| <b>3.2.4. Business</b> .....                              | <b>34</b> |
| <b>3.2.5. Application</b> .....                           | <b>34</b> |
| <b>3.2.6. Technology</b> .....                            | <b>35</b> |
| <b>3.2.7. Physical</b> .....                              | <b>35</b> |
| <b>3.2.8. Implementation &amp; migration</b> .....        | <b>35</b> |
| <b>3.2.9. Cross layer Business / Application</b> .....    | <b>36</b> |
| <b>3.2.10. Cross layer Application / Technology</b> ..... | <b>36</b> |
| <b>3.2.11. Cross Layer Business / Technology</b> .....    | <b>36</b> |
| <b>3.2.12. All Relationships</b> .....                    | <b>36</b> |
| <b>3.2.13. Derived Relationships</b> .....                | <b>37</b> |

# 1. Snippets import test

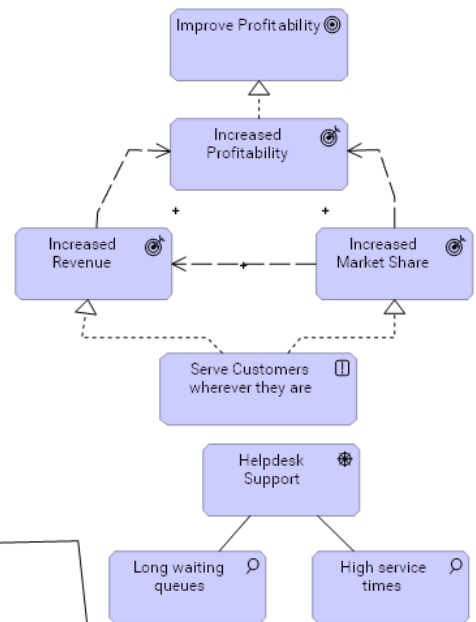
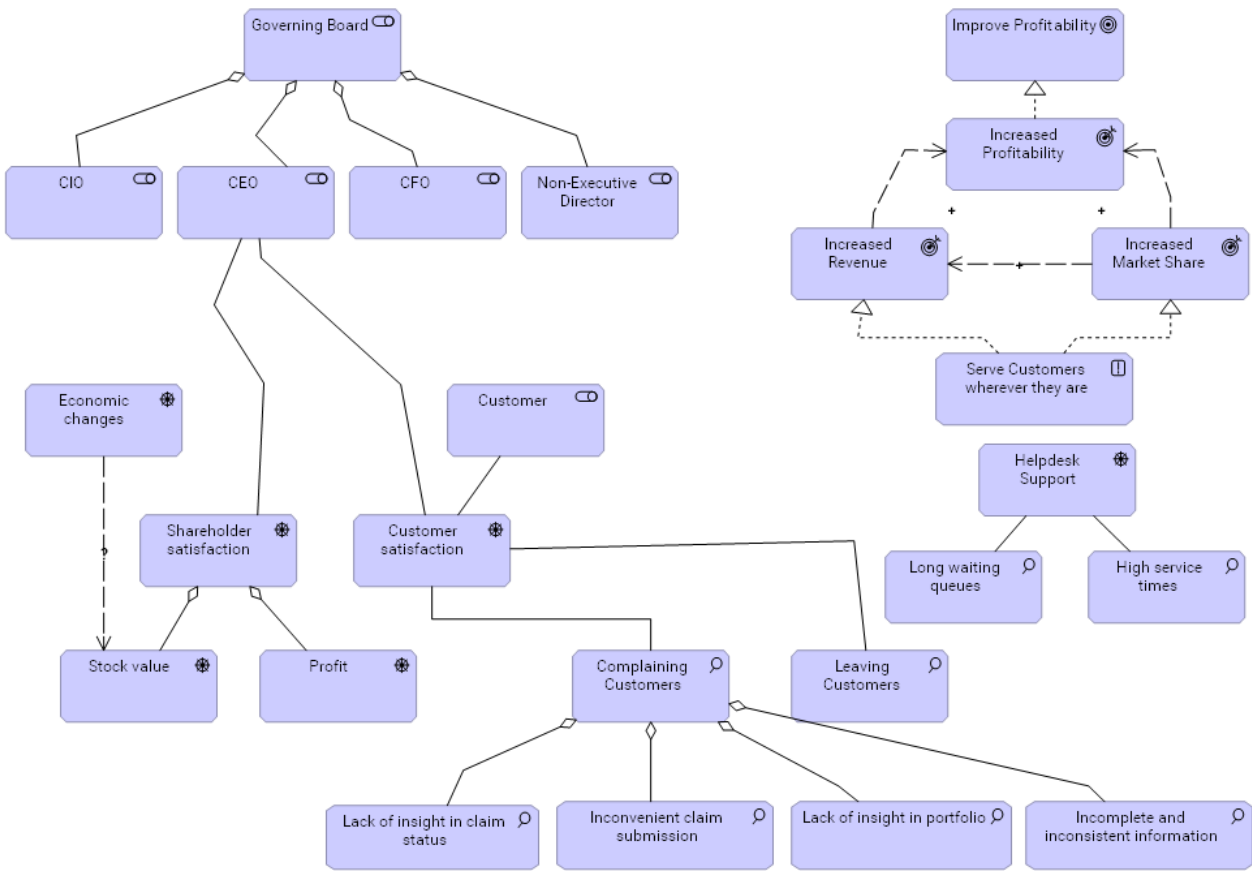
Basic import tests using the provided snippets files

## 1.1. Interoperability testing snippet-1.xml

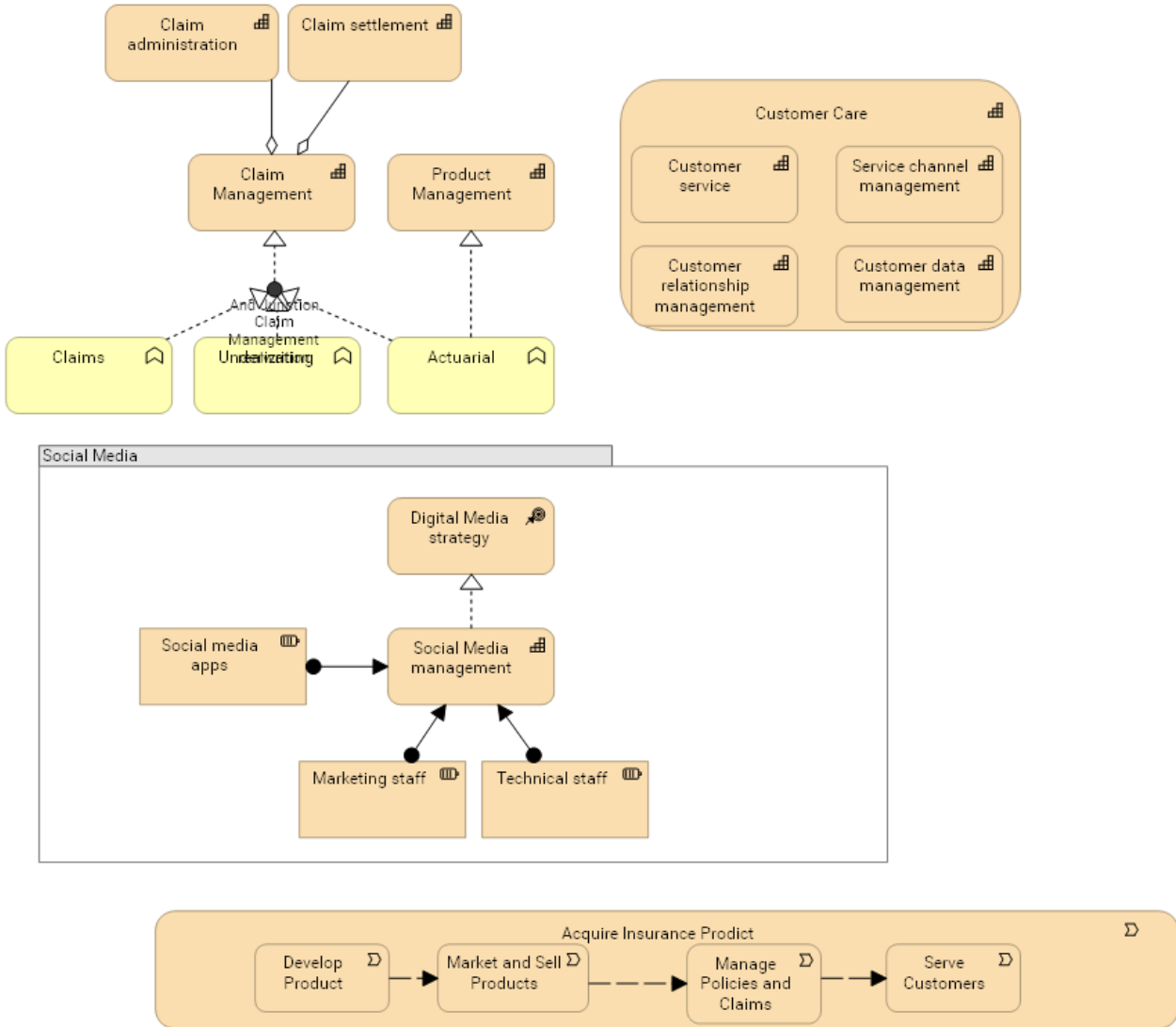


Test Snippet 1: Technology Layer  
The relationships in this snippet are simple straight lines

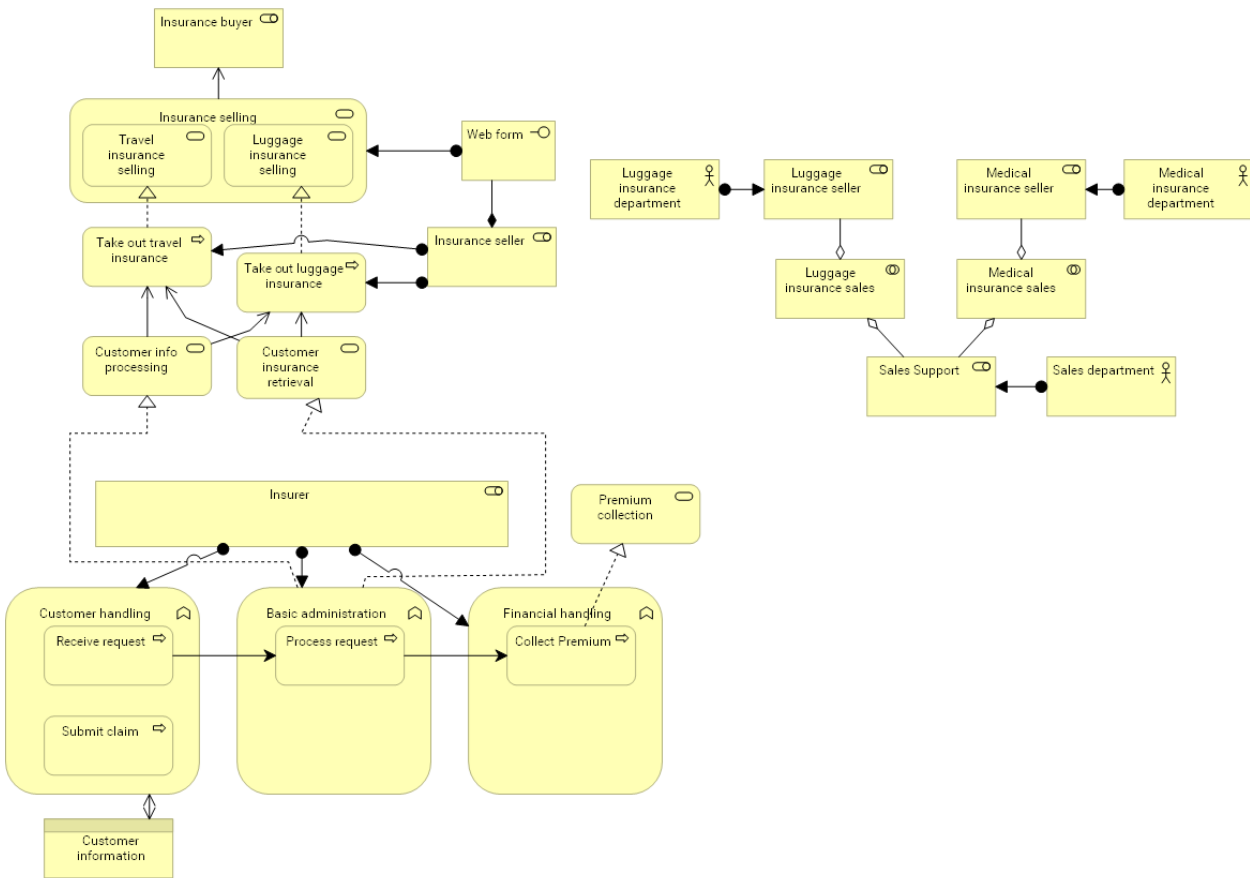
## 1.2. Interoperability testing snippet-2.xml



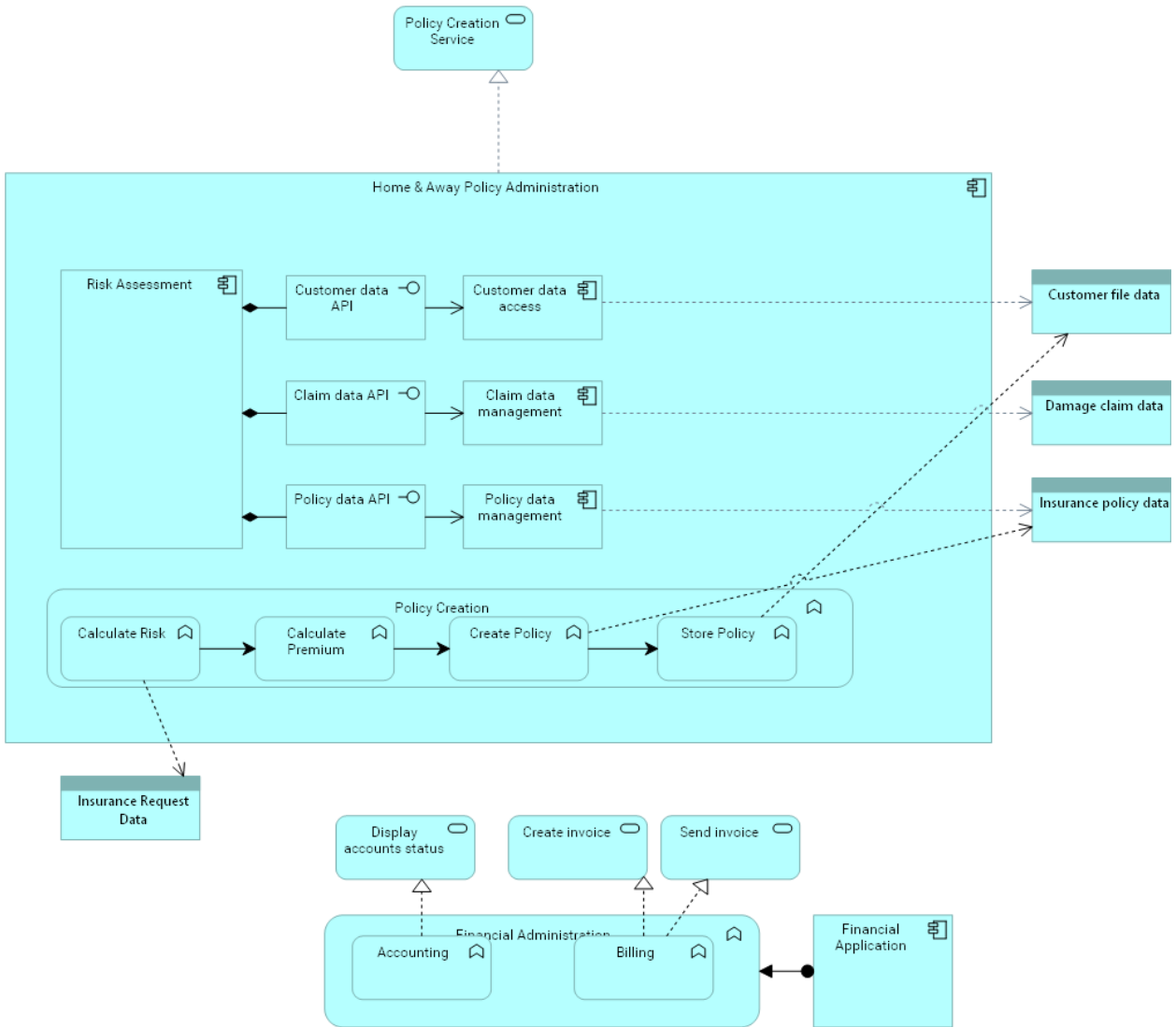
### 1.3. Interoperability testing snippet-3.xml



## 1.4. Interoperability testing snippet-4.xml

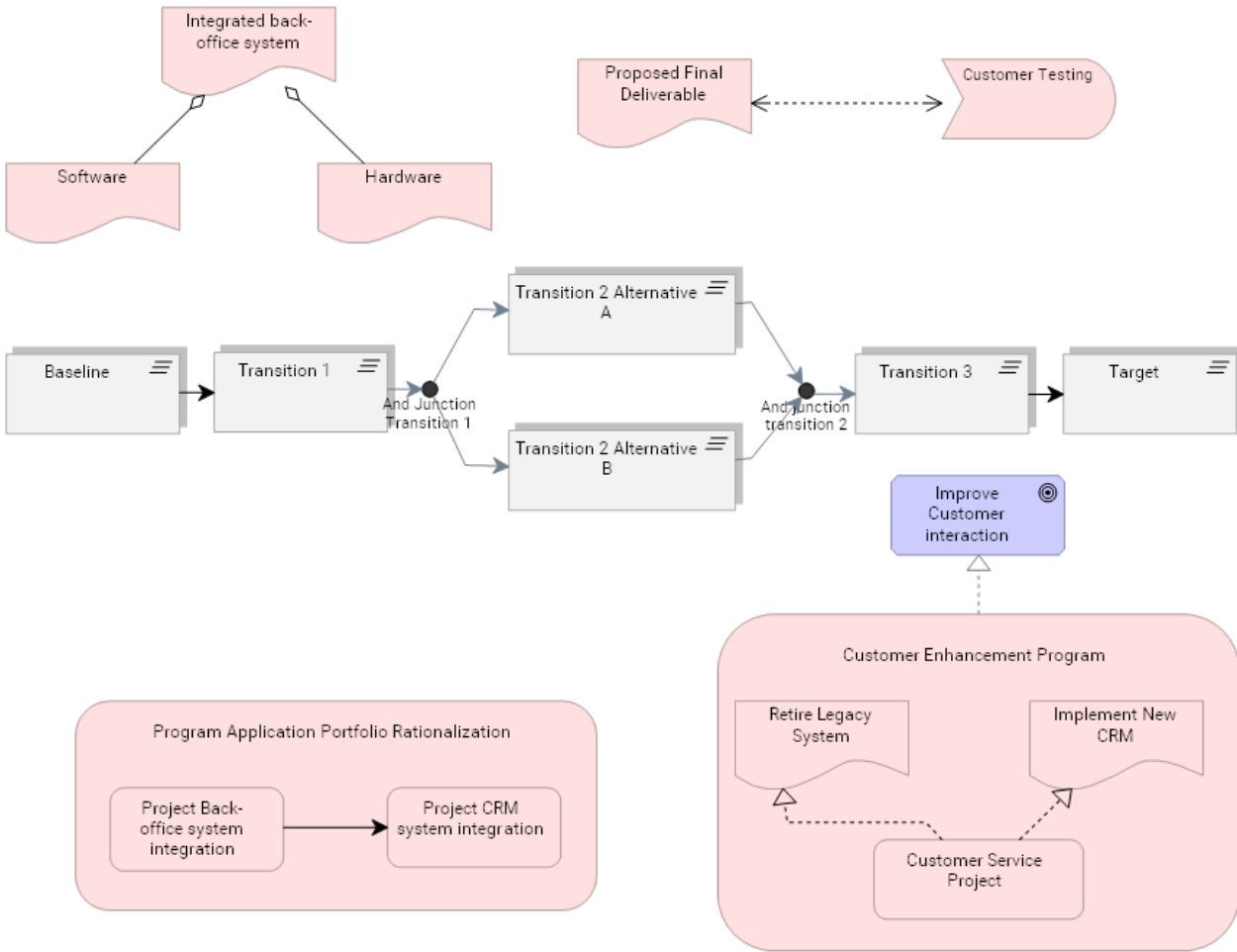


# 1.5. Interoperability testing snippet-5.xml

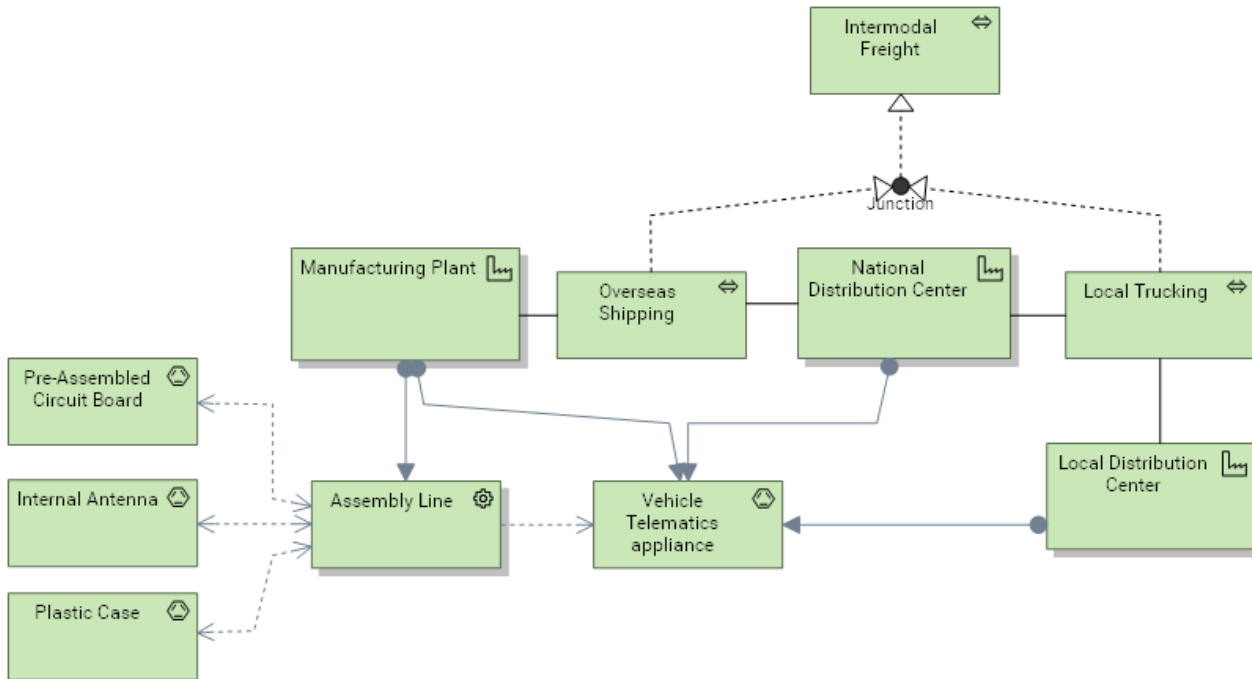




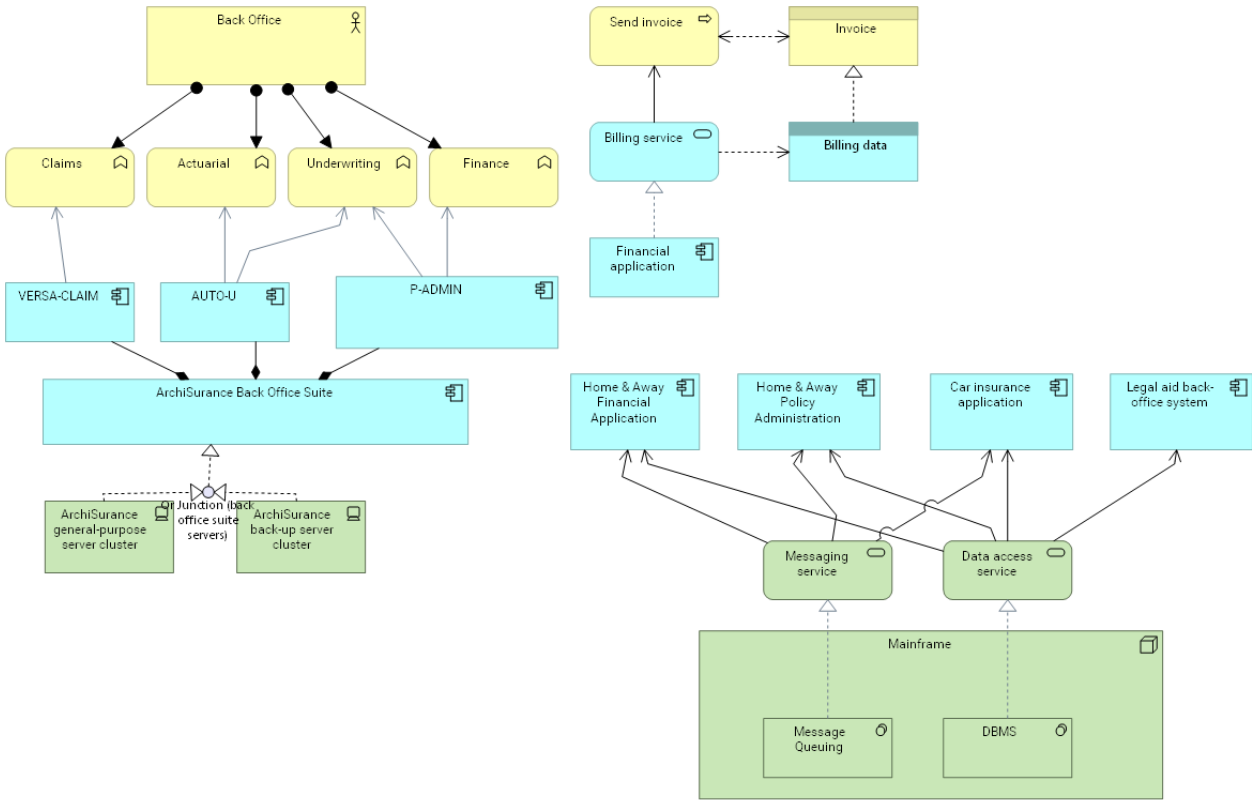
## 1.6. Interoperability testing snippet-6.xml



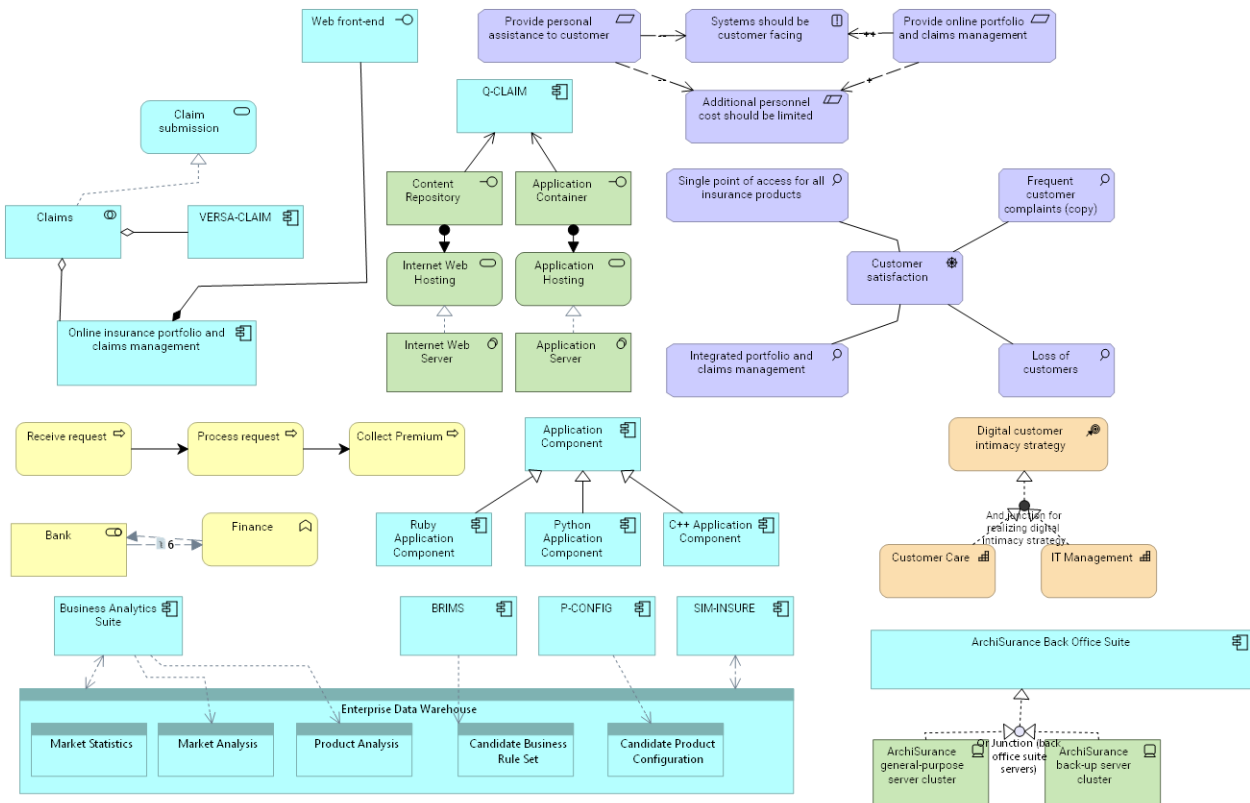
## 1.7. Interoperability testing snippet-7.xml



## 1.8. Interoperability testing snippet-8.xml

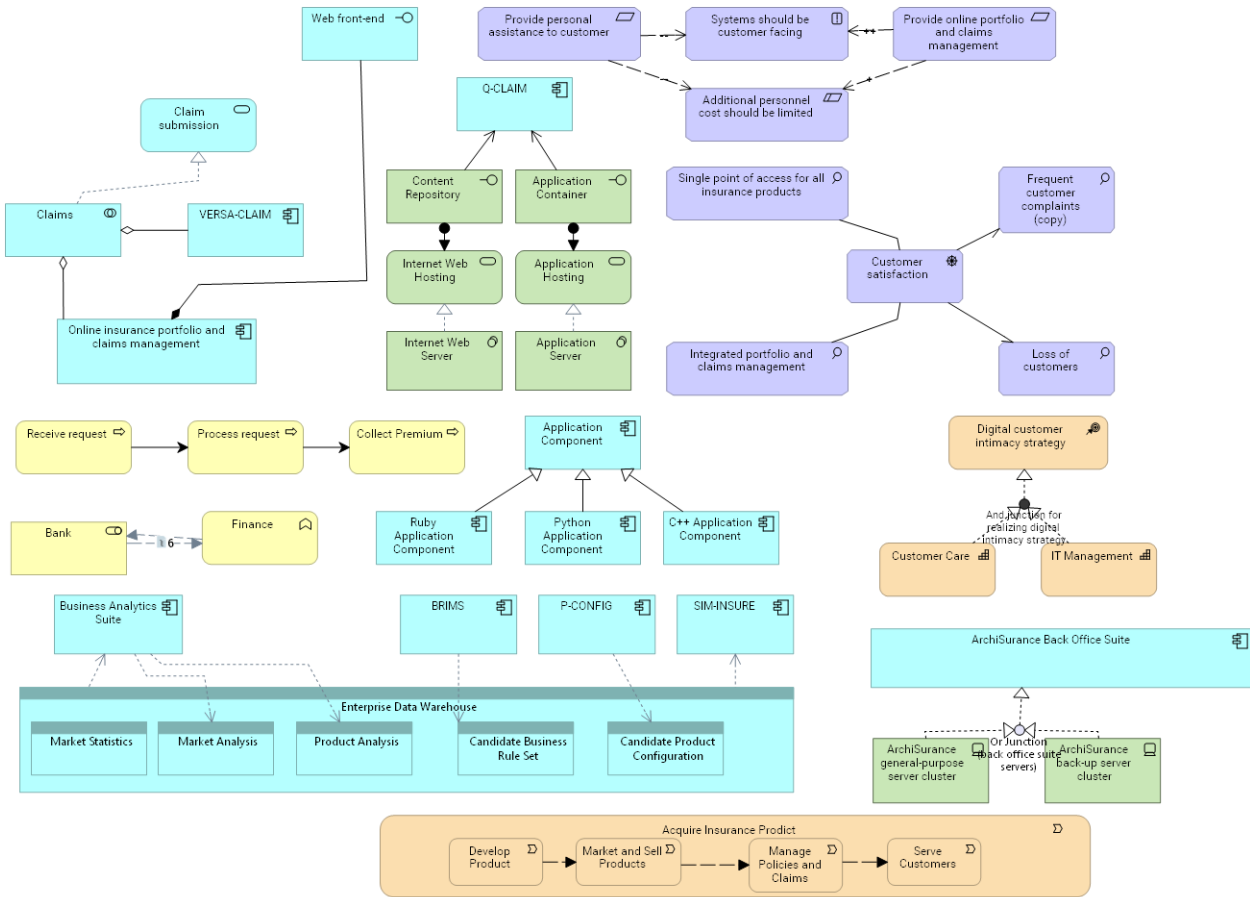


# 1.9. Interoperability testing snippet-9.xml



# 1.10. Interoperability testing snippet-10.xml

With the directed association



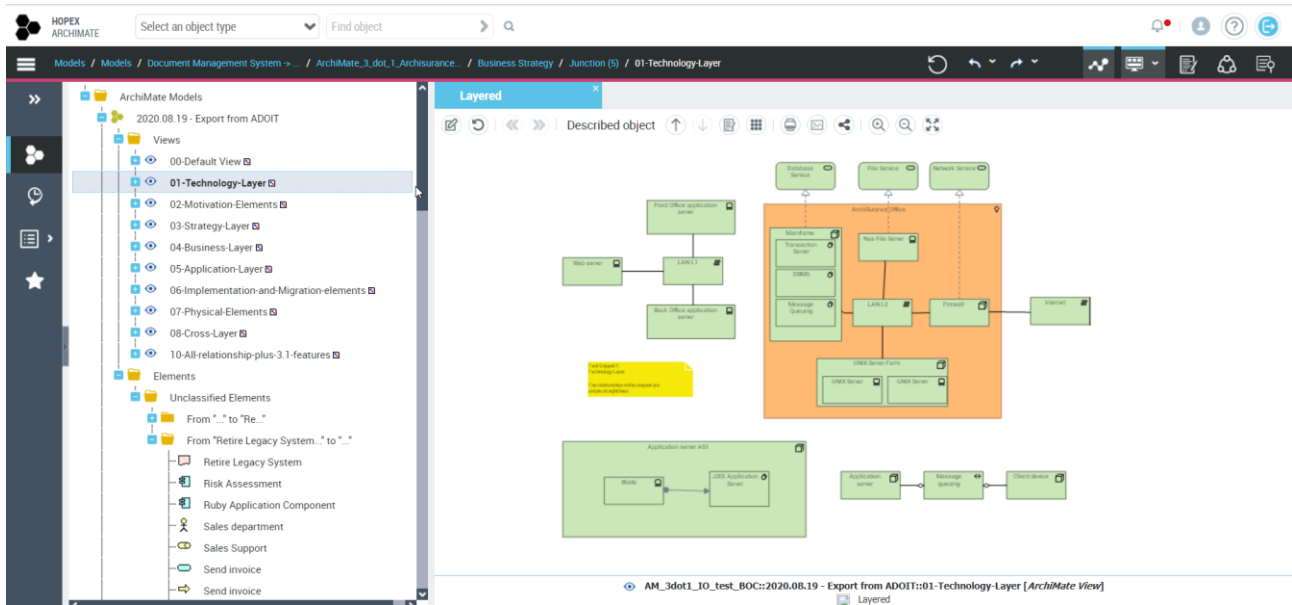
## 2. Other ArchiMate Tools Import tests

### 2.1. Import from BOC AdoIT

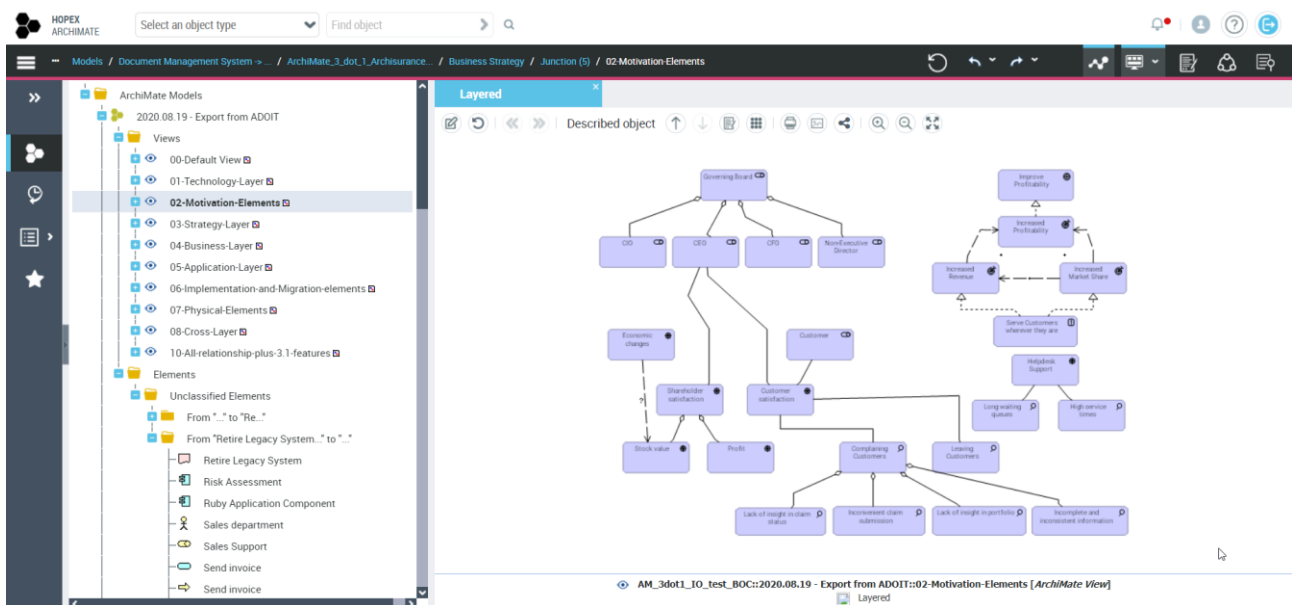
Import of file :

[https://certification.opengroup.org/register/archimate/boc\\_archimate3\\_tool\\_se3.xml](https://certification.opengroup.org/register/archimate/boc_archimate3_tool_se3.xml)

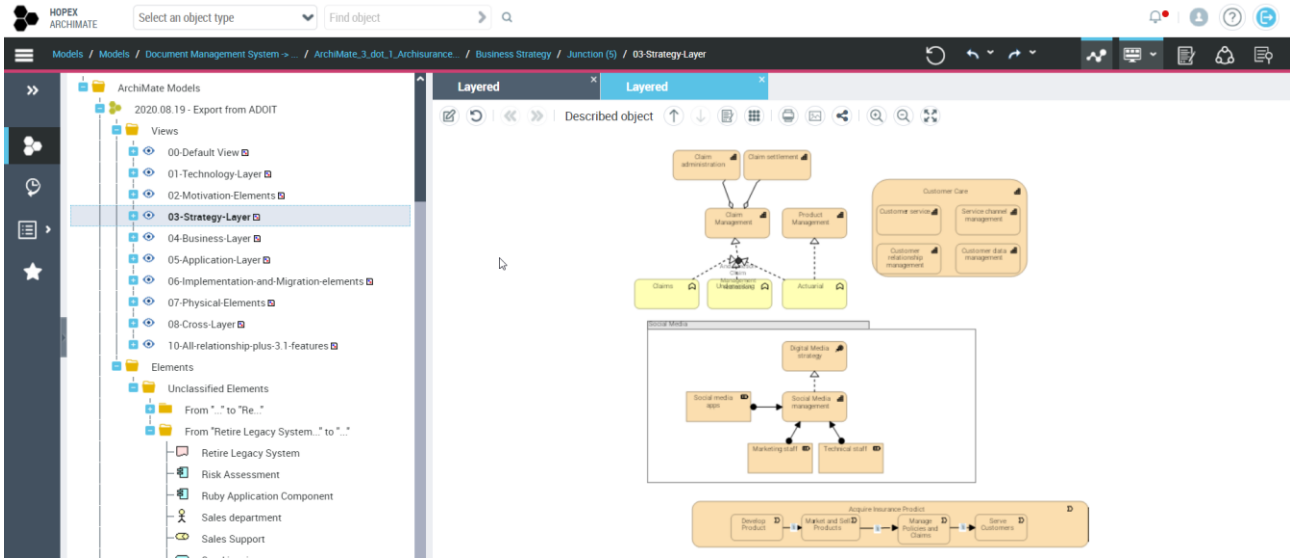
#### 2.1.1. 01 technology layer



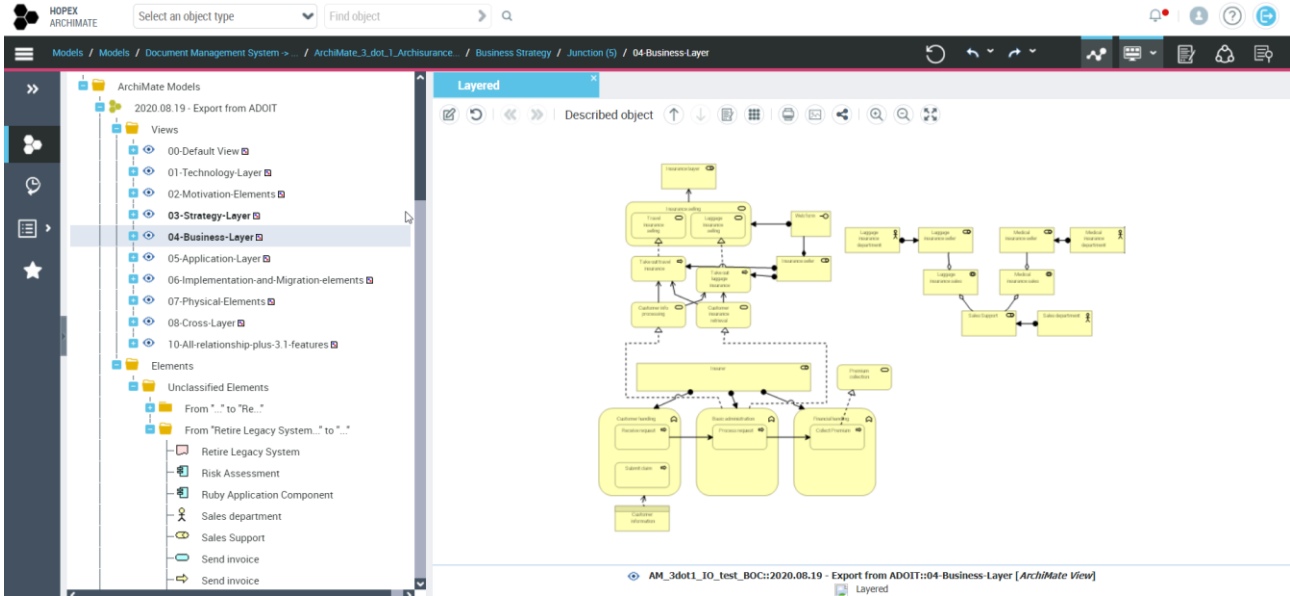
#### 2.1.2. 02 motivation elements



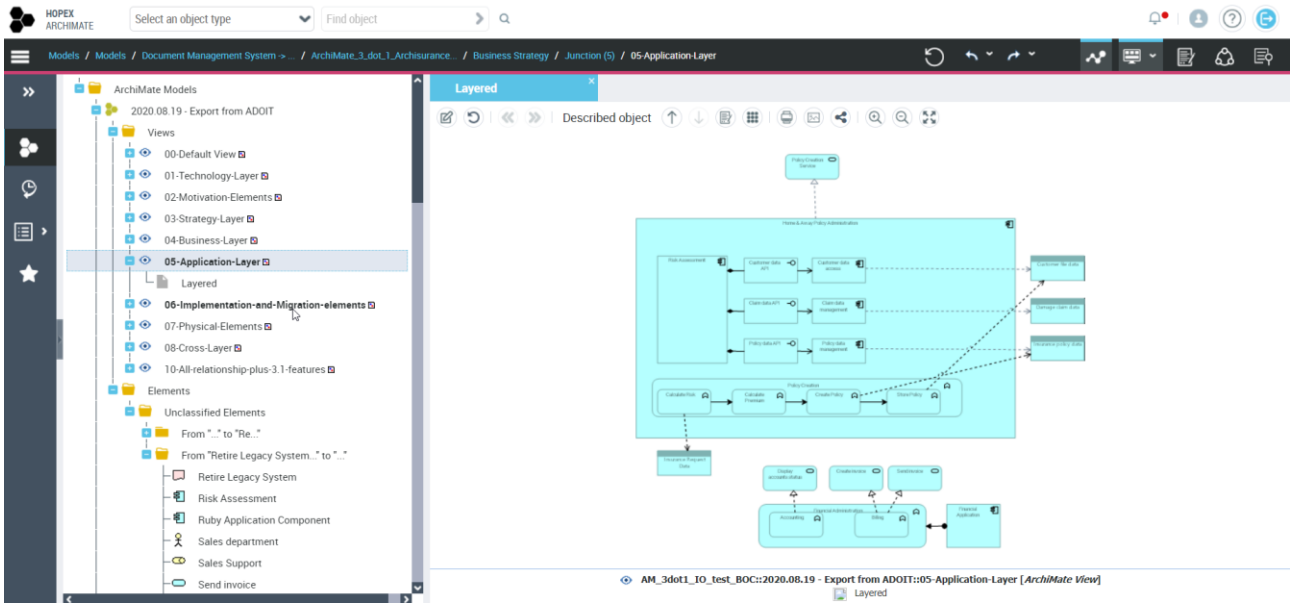
### 2.1.3. 03 Strategy Layer



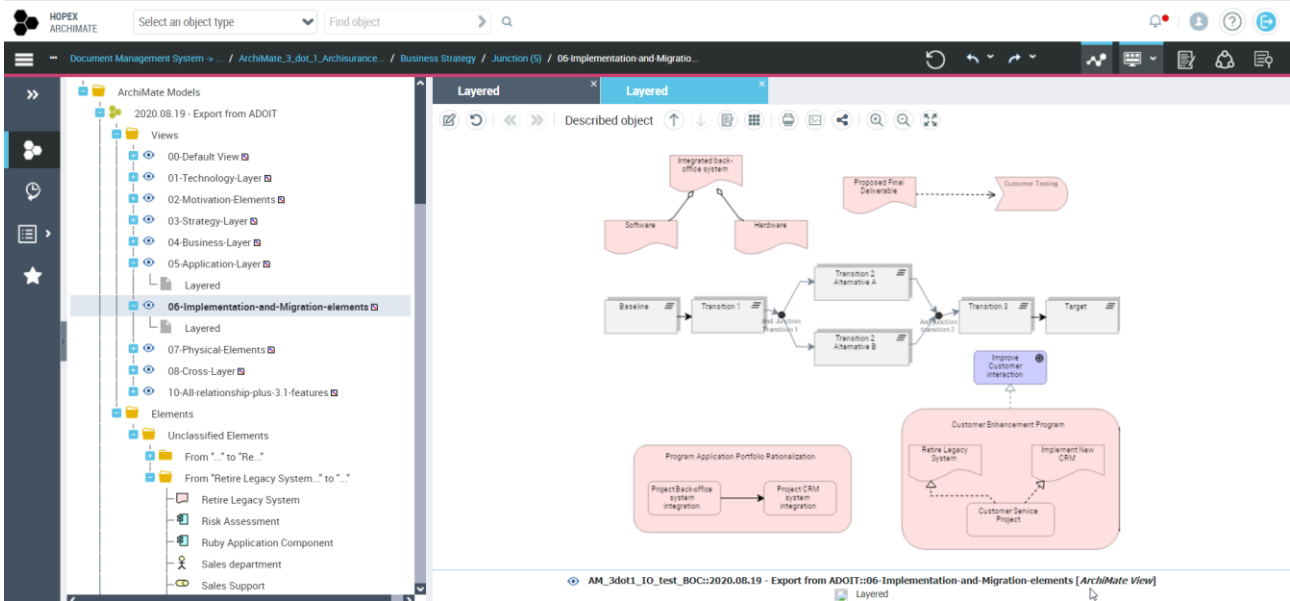
### 2.1.4. 04 – business layer



## 2.1.5. 05 – Application Layer

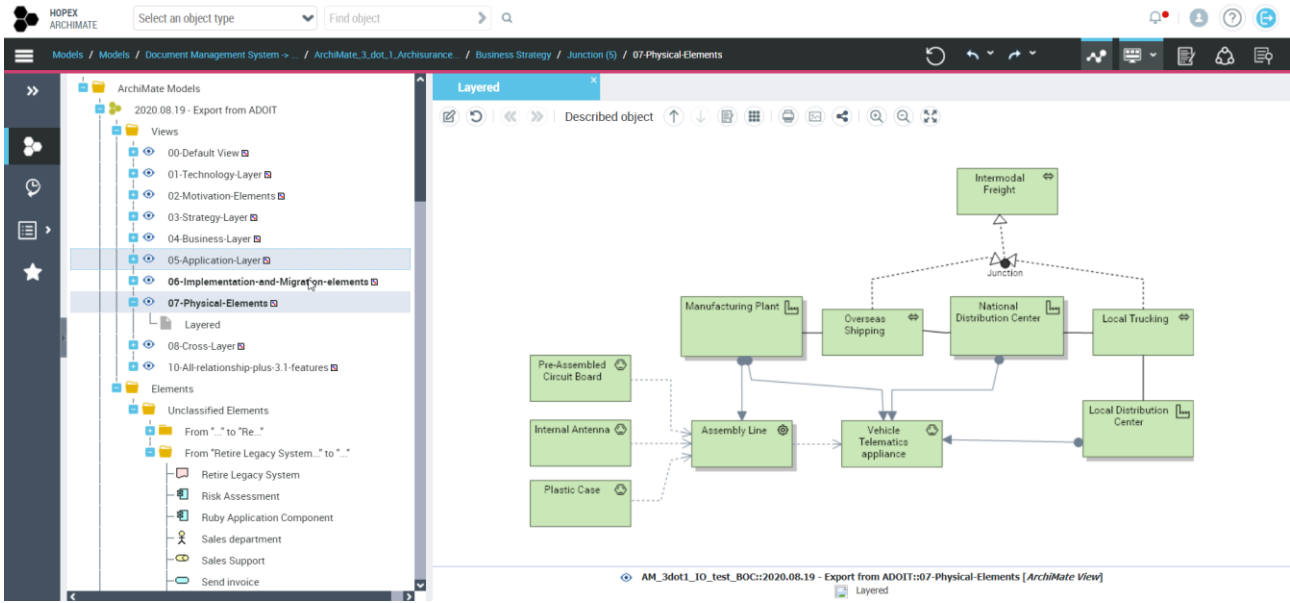


## 2.1.6. 06 implementation and migration element

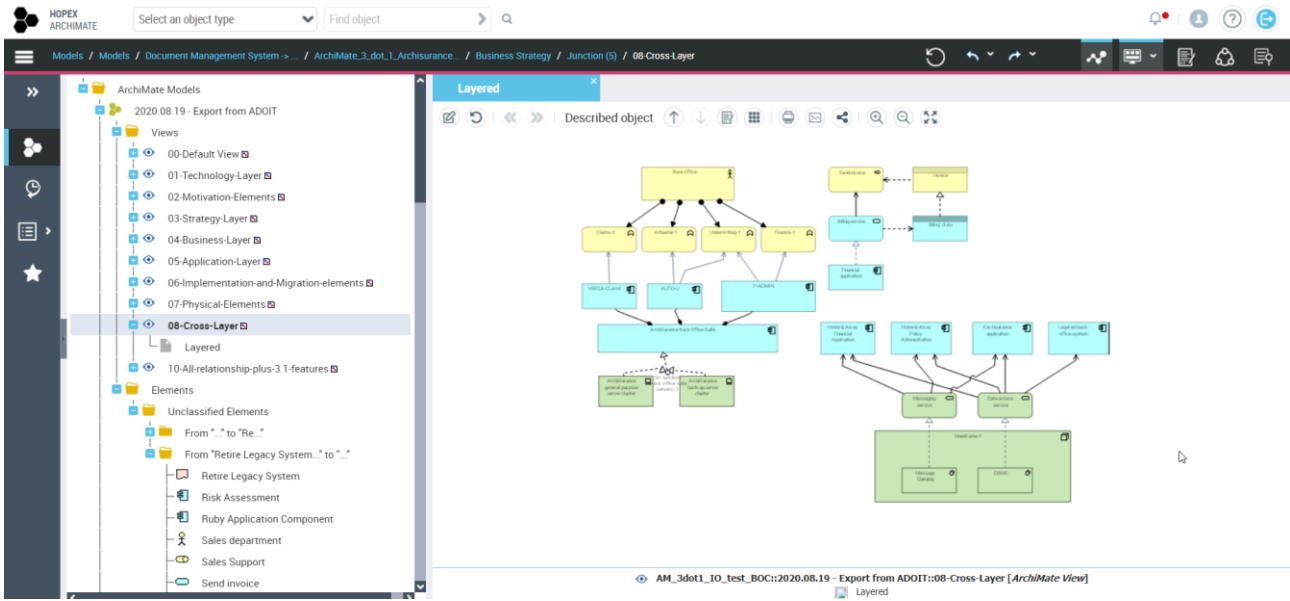




## 2.1.7. 07- physical elements



## 2.1.8. 08 - Cross layer



## 2.1.9. 10 – All relationships plus 3.1 features

The screenshot displays the HOPEX ARCHIMATE software interface. On the left, a sidebar shows a tree view of models and views. The selected view is '10-All-relationship-plus-3.1-features'. The main workspace shows a complex ArchiMate diagram with various elements and relationships. The diagram is organized into layers, with a 'Layered' view selected at the top. The diagram includes elements such as 'Business Strategy', 'Business Process', 'Business Capability', and 'Business Role', connected by relationships. The diagram is organized into layers, with a 'Layered' view selected at the top.

AM\_3dot1\_10\_test\_BOC:2020.08.19 - Export from ADOIT:10-All-relationship-plus-3.1-features [ArchiMate View] Layered

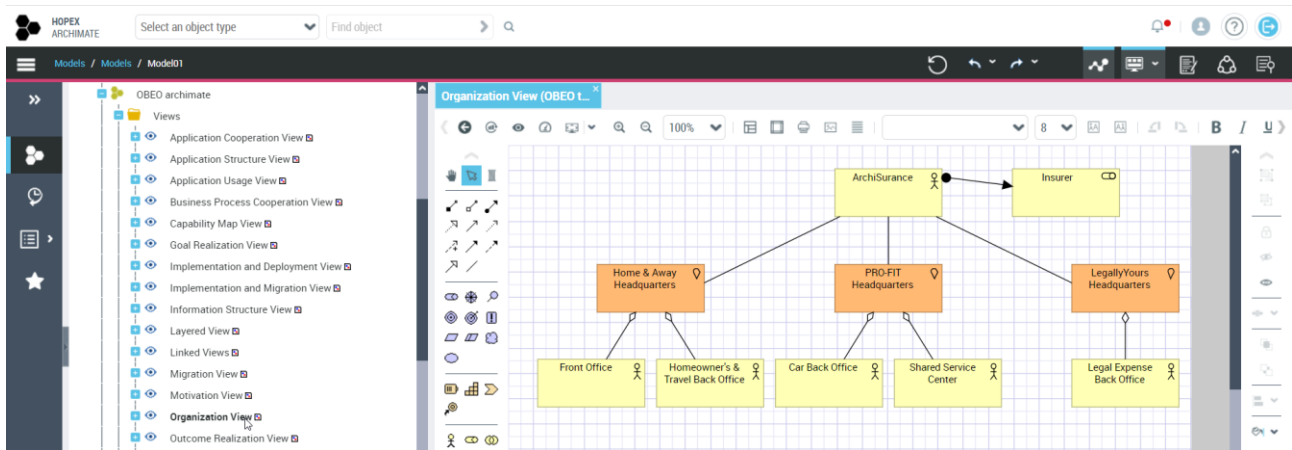
## 2.2. Import from OBEO Smart EA

Import of file:

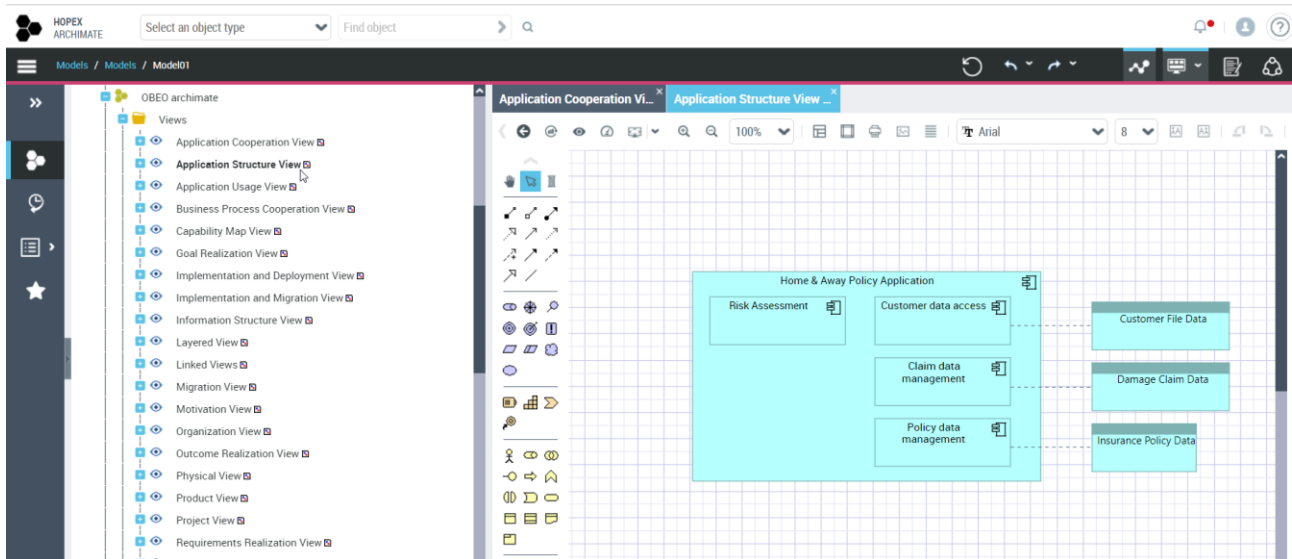
[https://certification.opengroup.org/register/archimate/obeo\\_archimate3\\_tool\\_se3.xml](https://certification.opengroup.org/register/archimate/obeo_archimate3_tool_se3.xml)

note: views are in the same order as in pdf evidence file

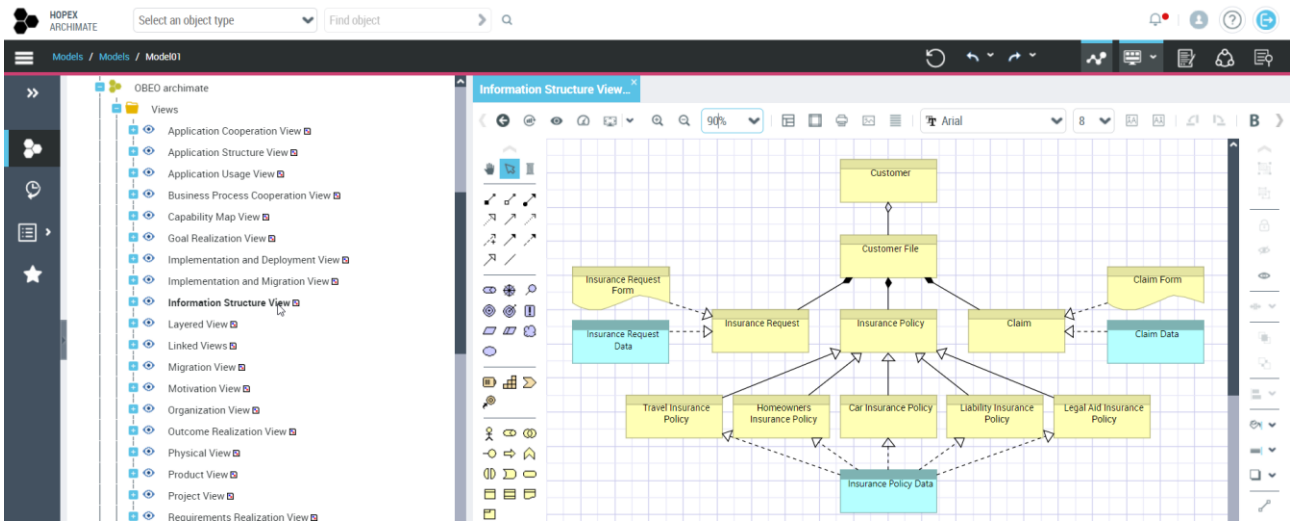
### Organization



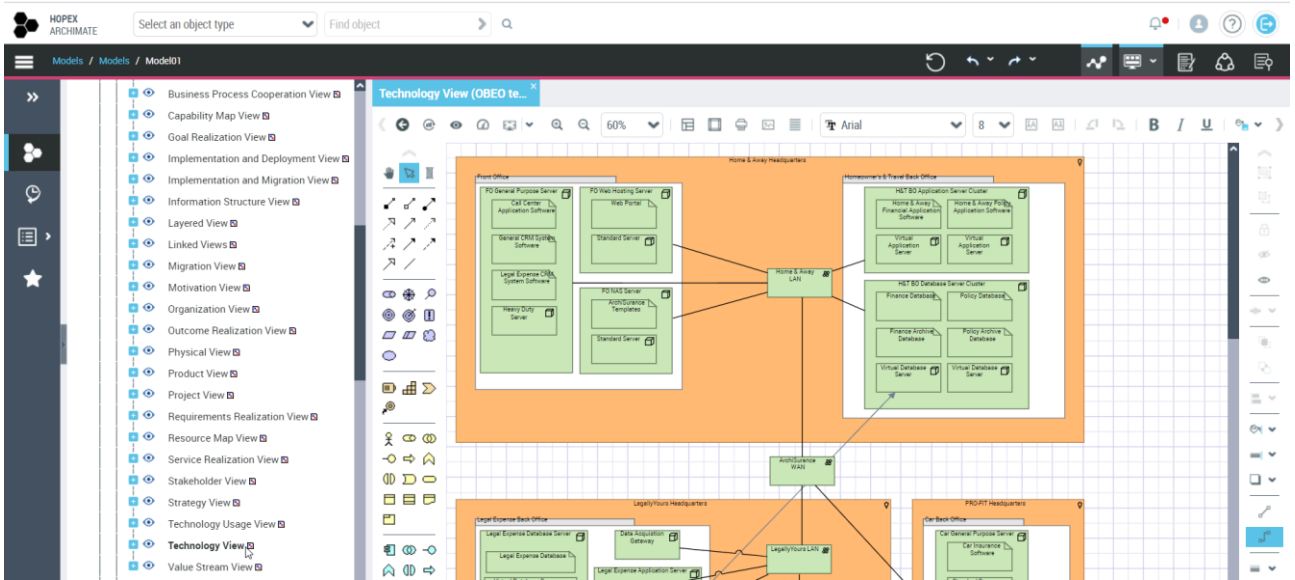
### Application Structure



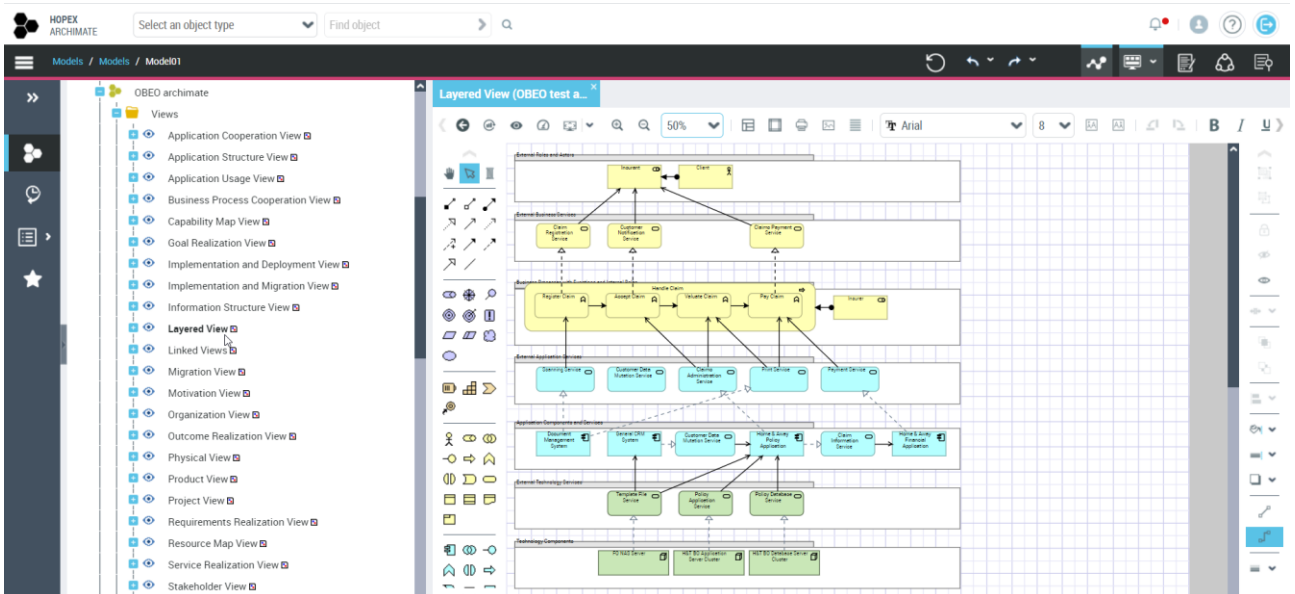
### Information Structure



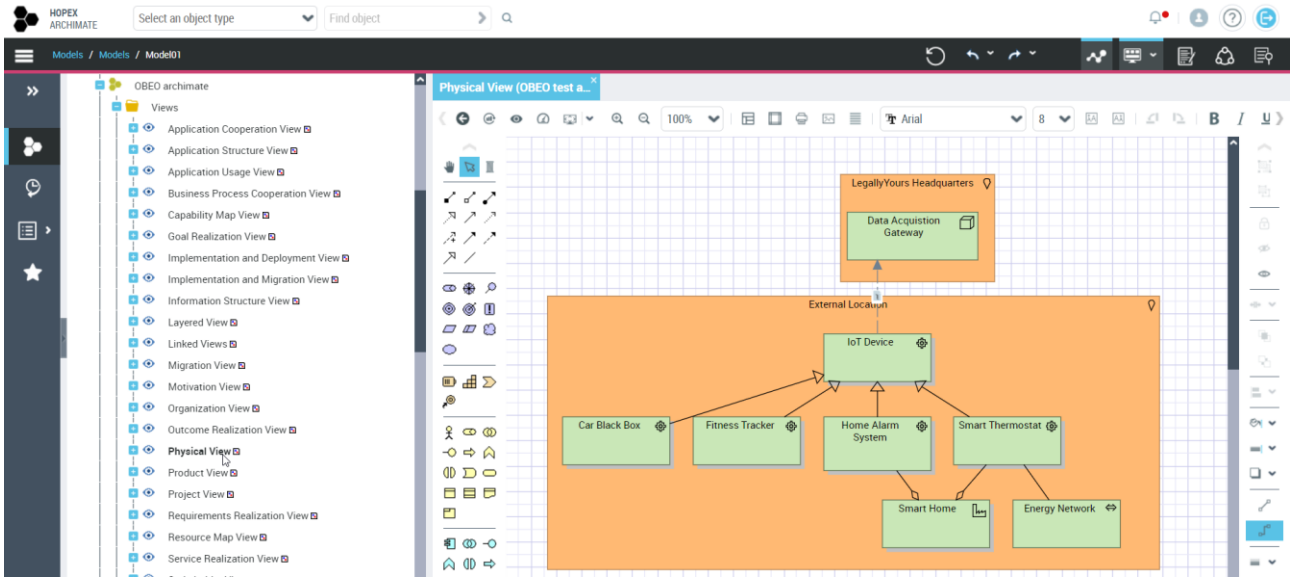
## Technology



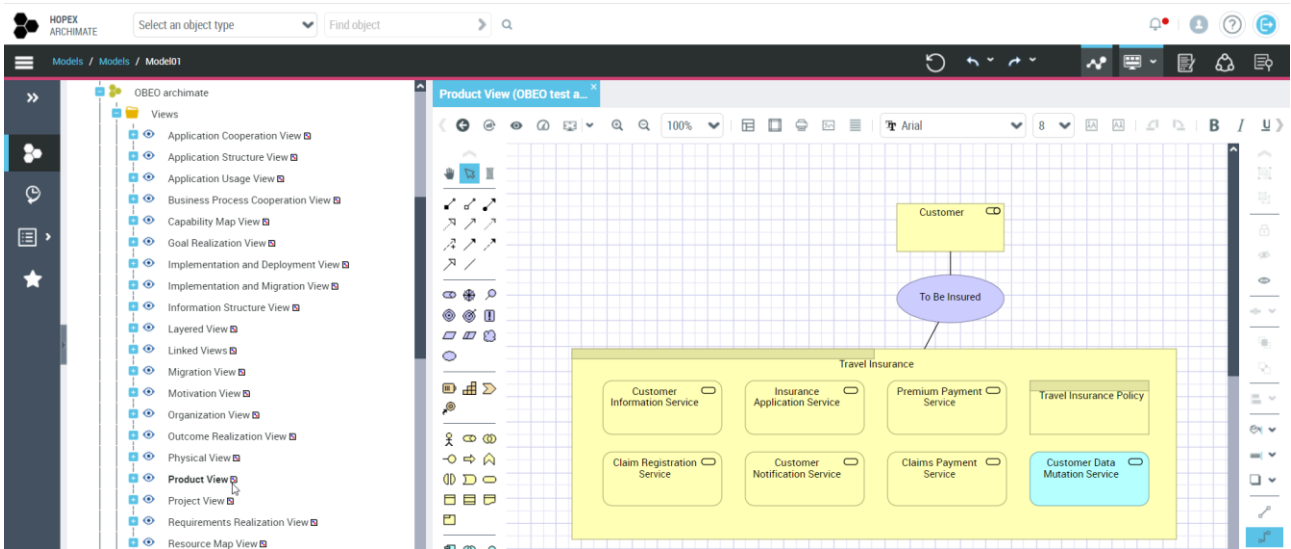
## Layered



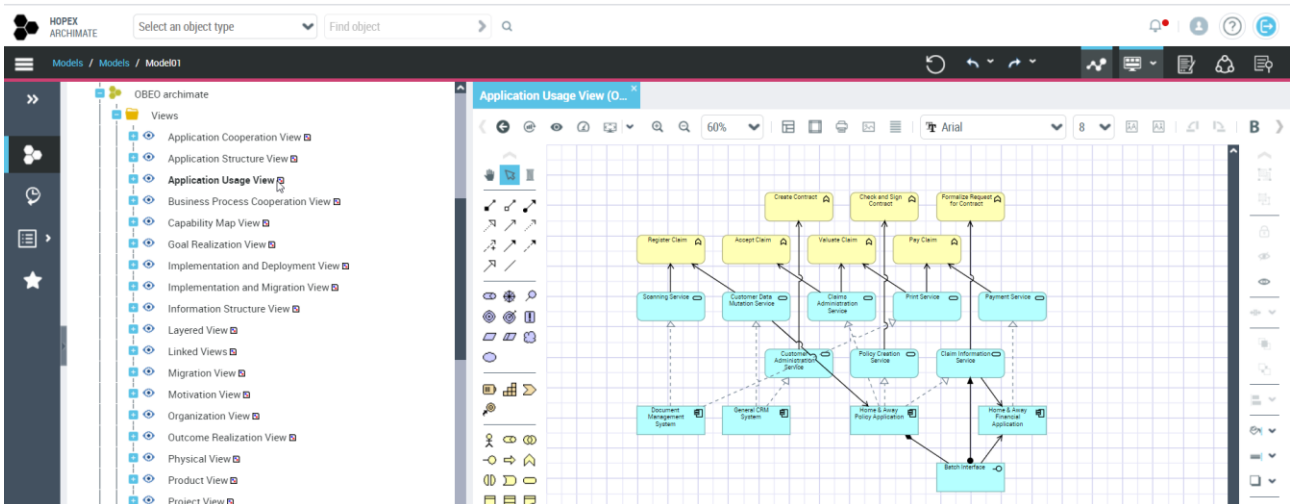
## Physical



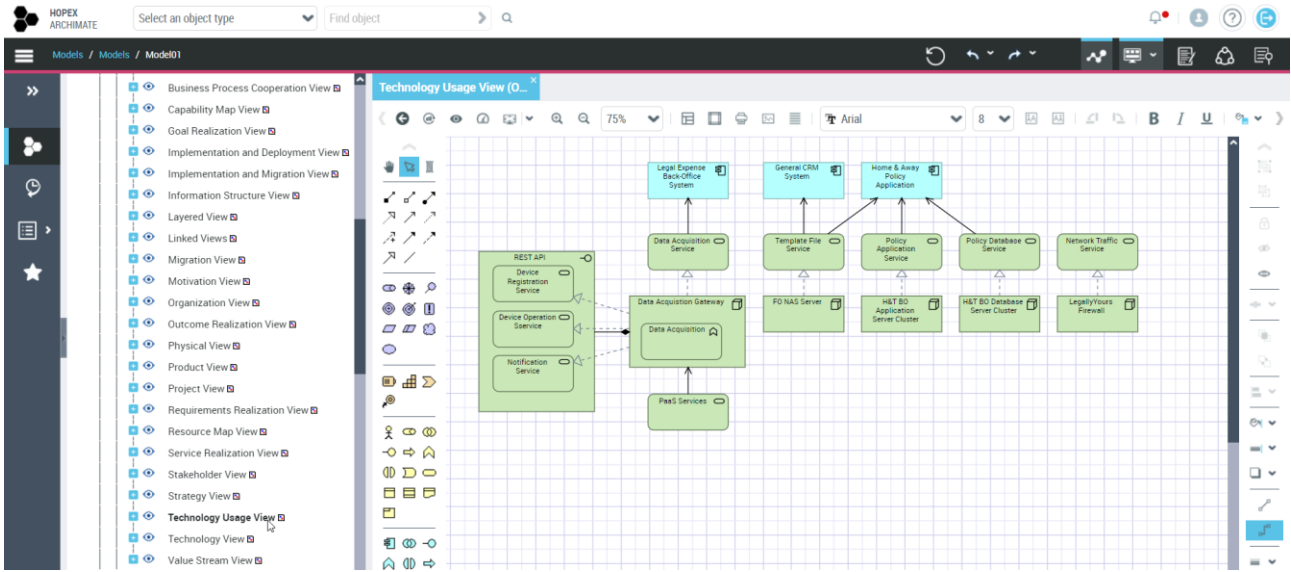
## Product



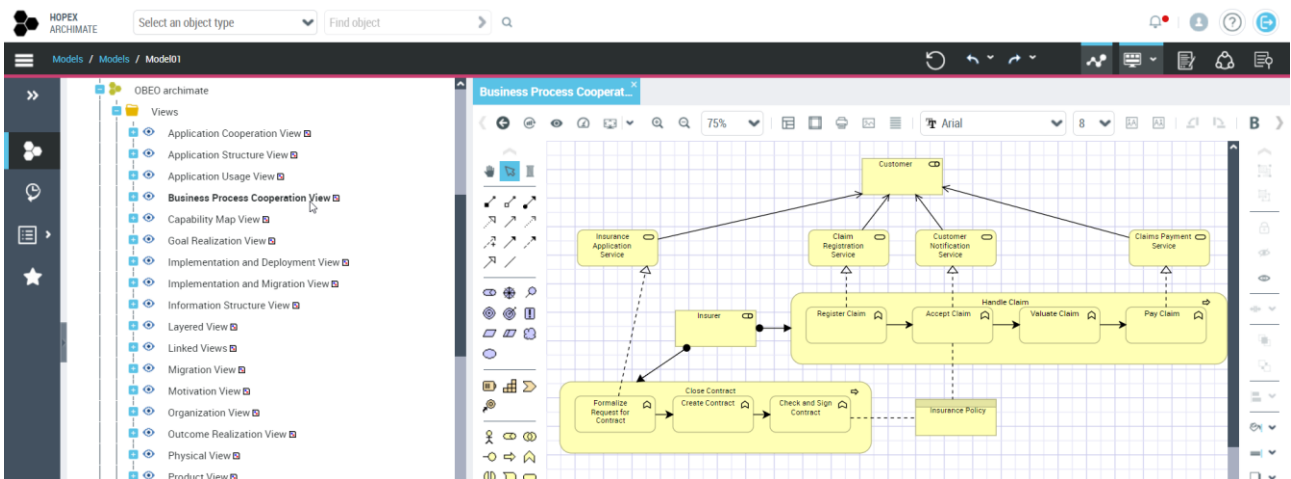
## Application Usage



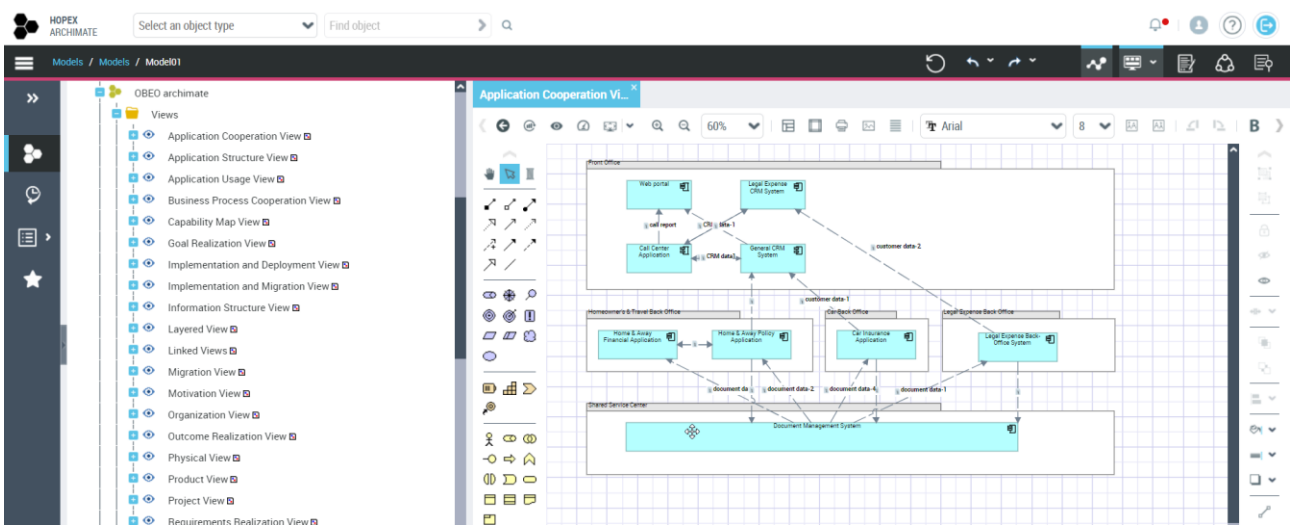
## Technology Usage



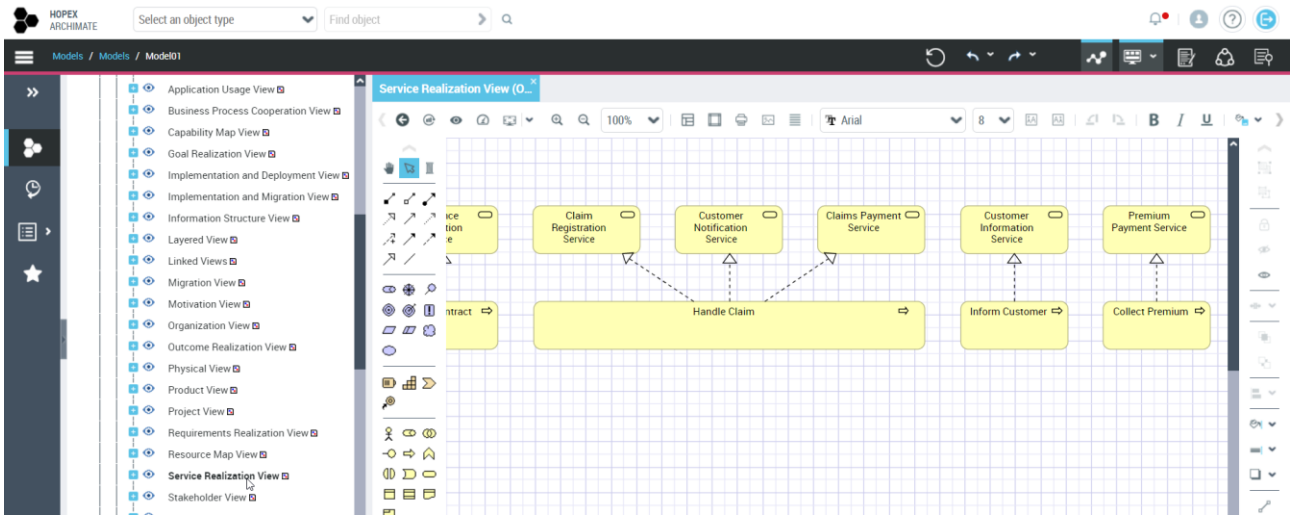
## Business Process Cooperation



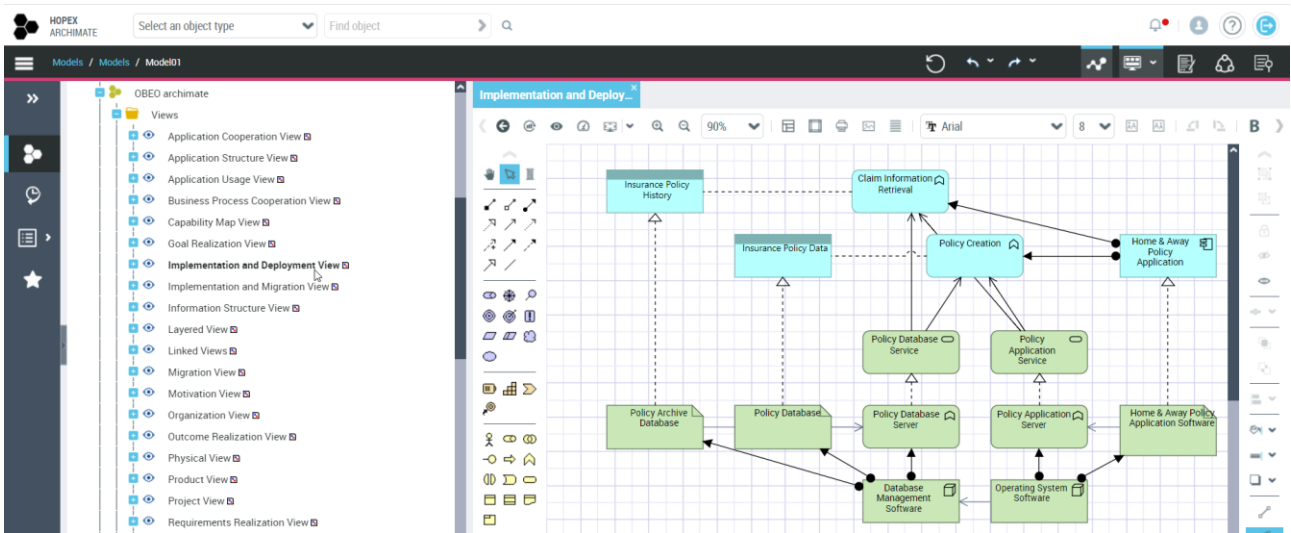
## Application Cooperation



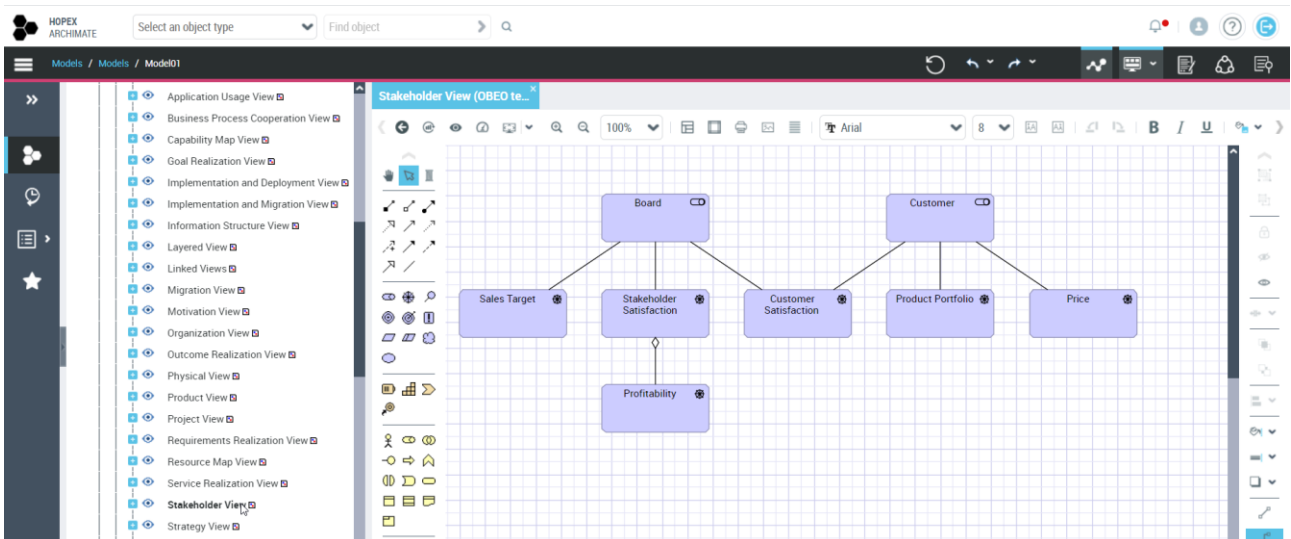
## Service Realization



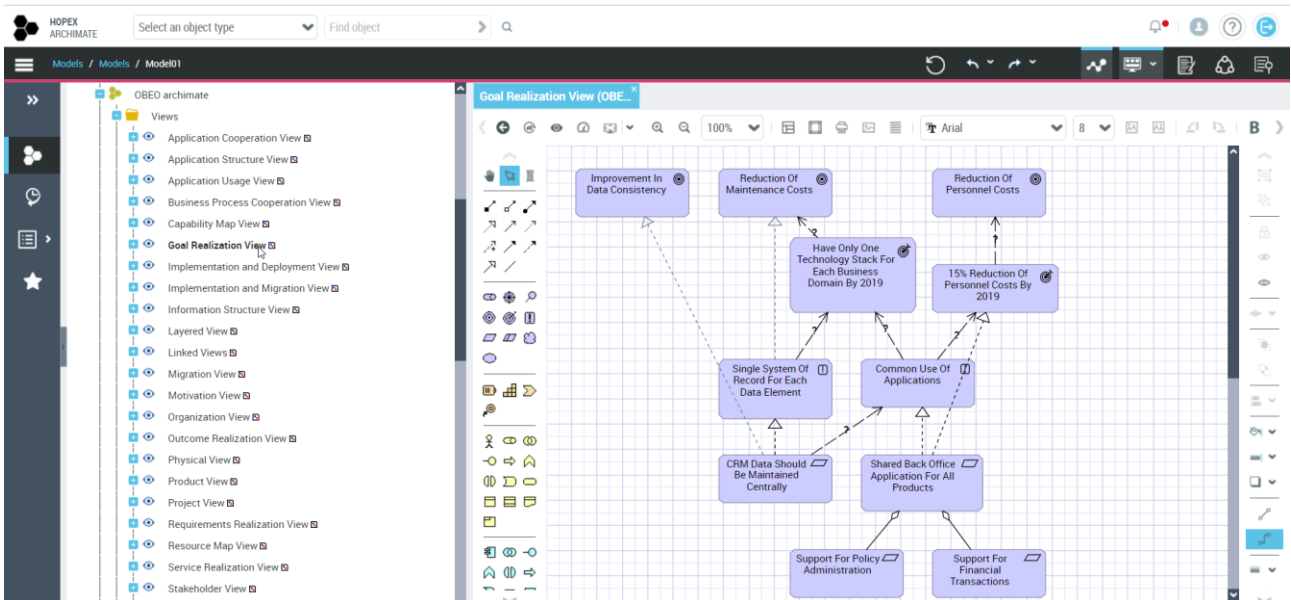
## Implementation and Deployment



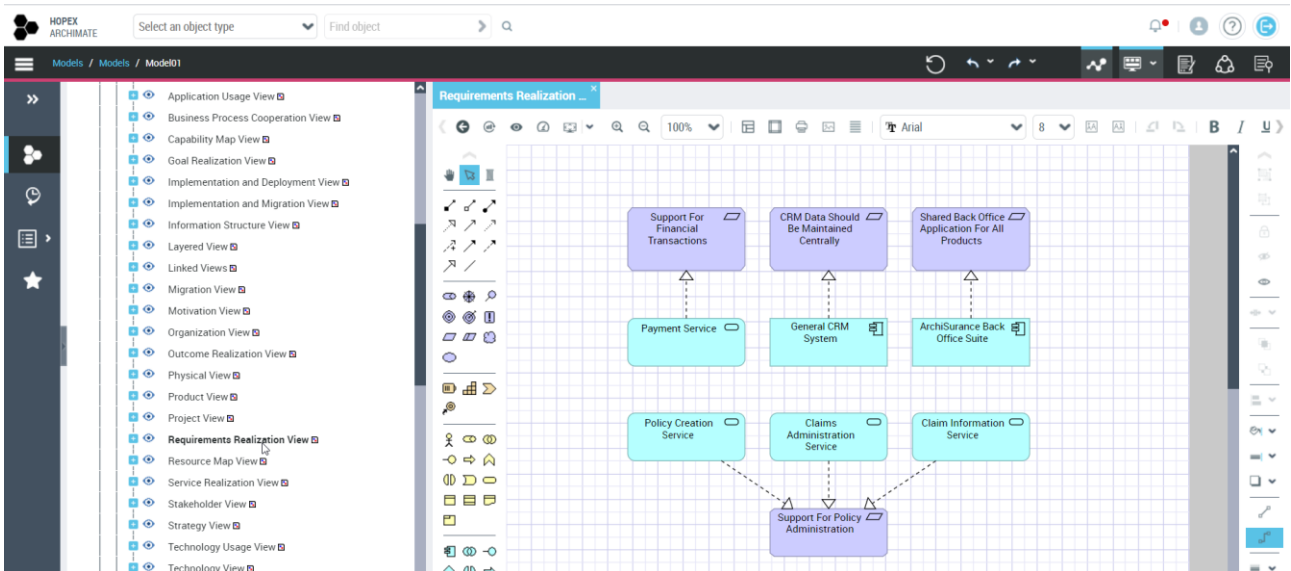
## Stakeholder



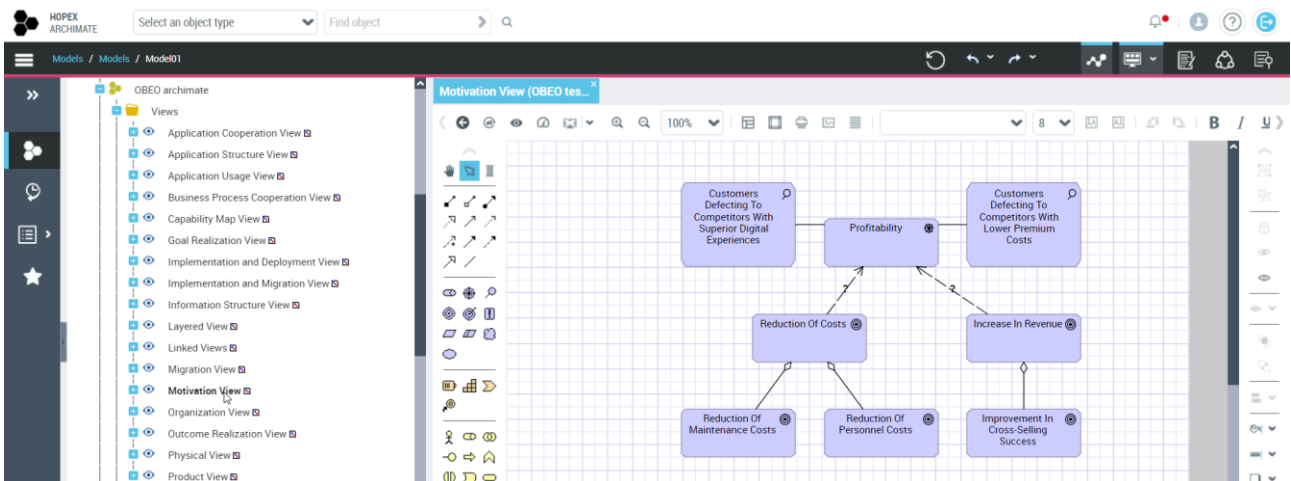
## Goal Realization



## Requirement Realization

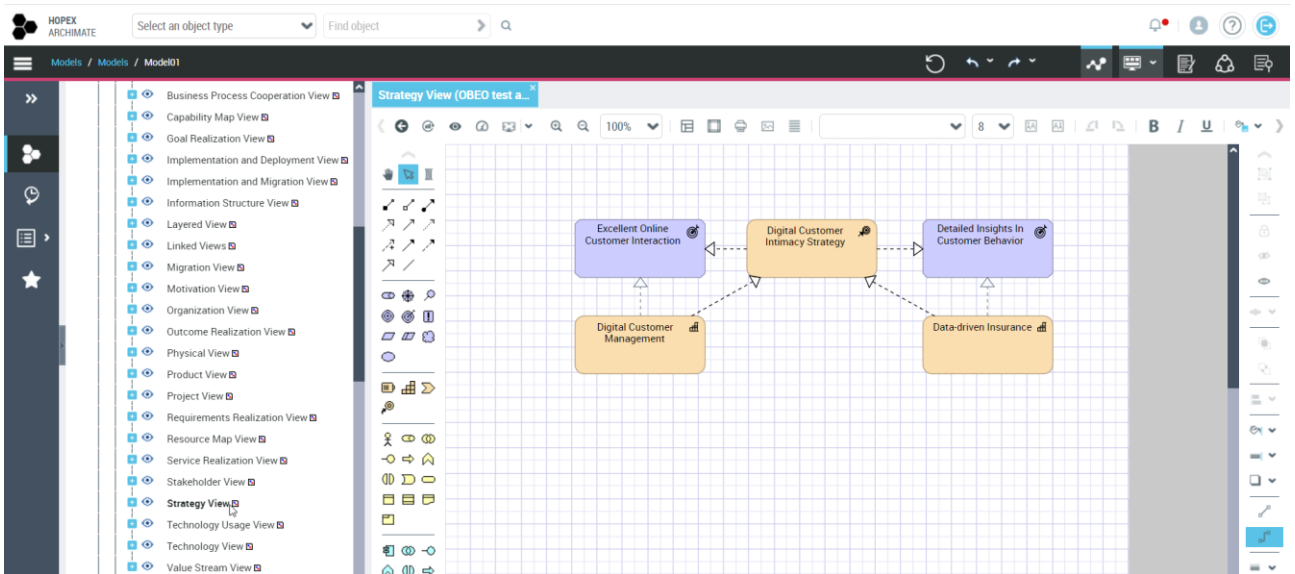


## Motivation

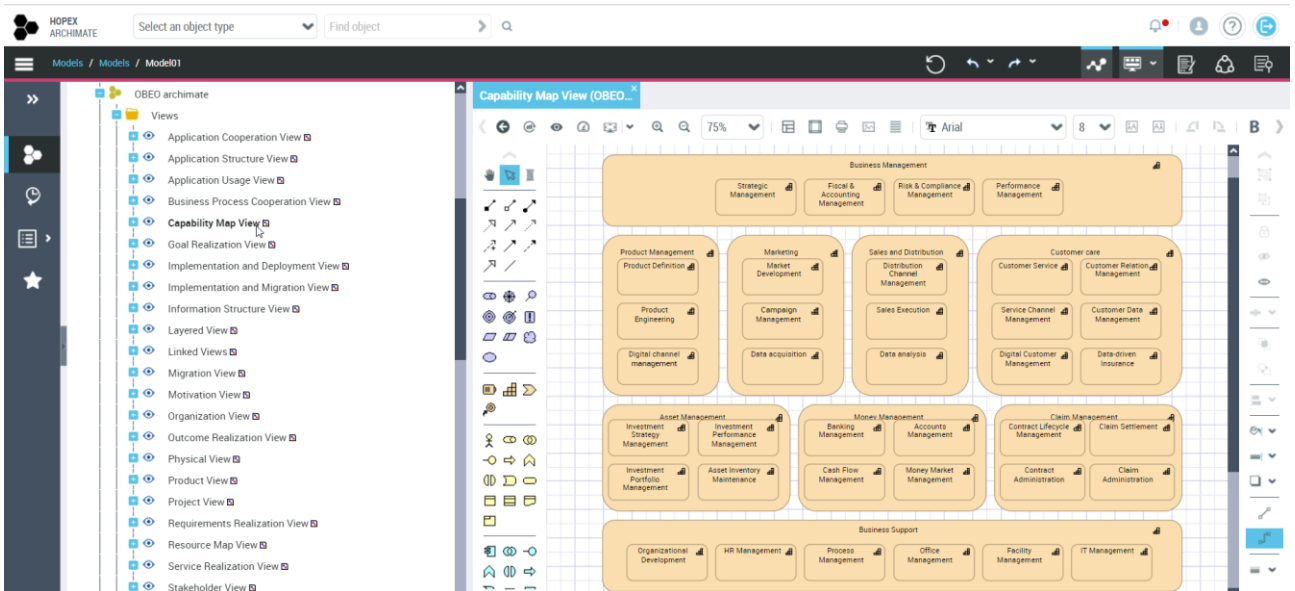


## Strategy

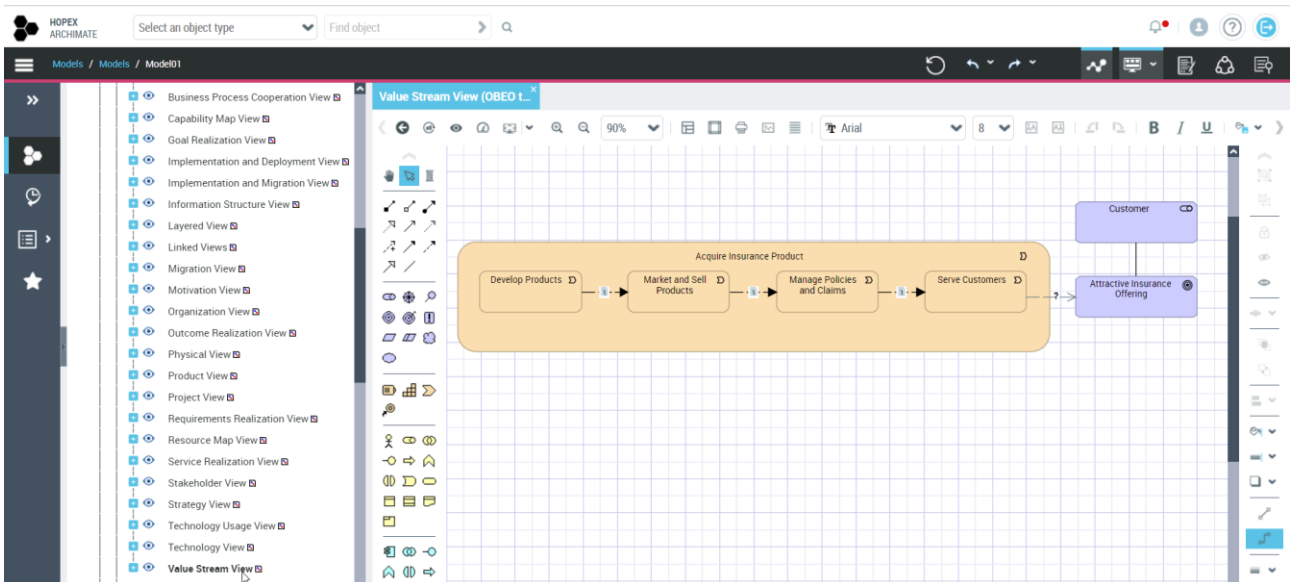




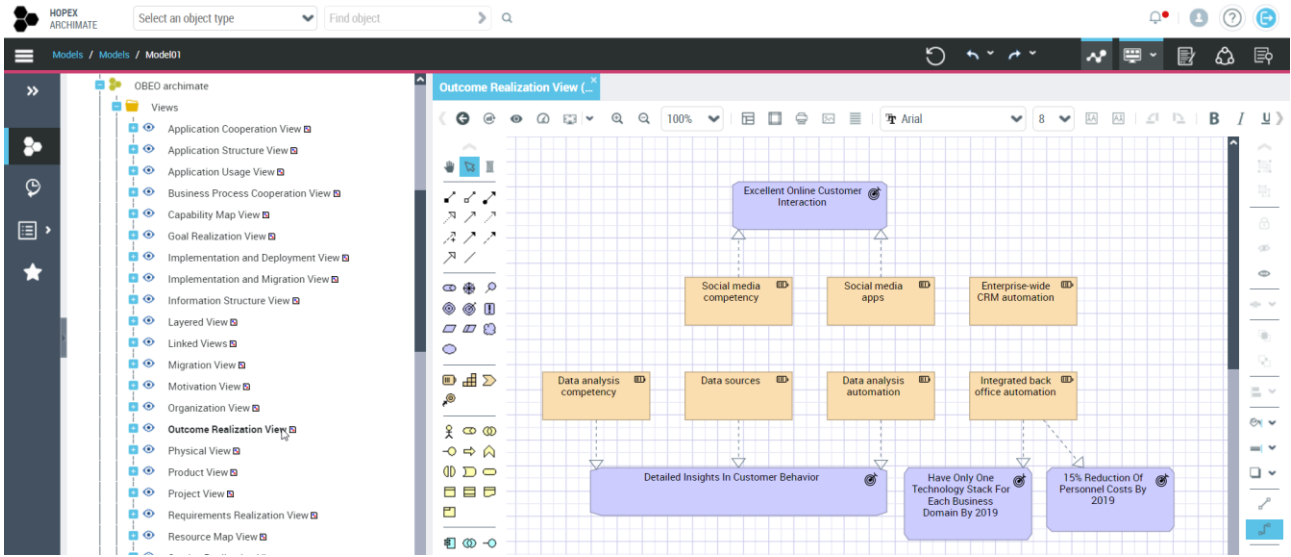
## Capability Map



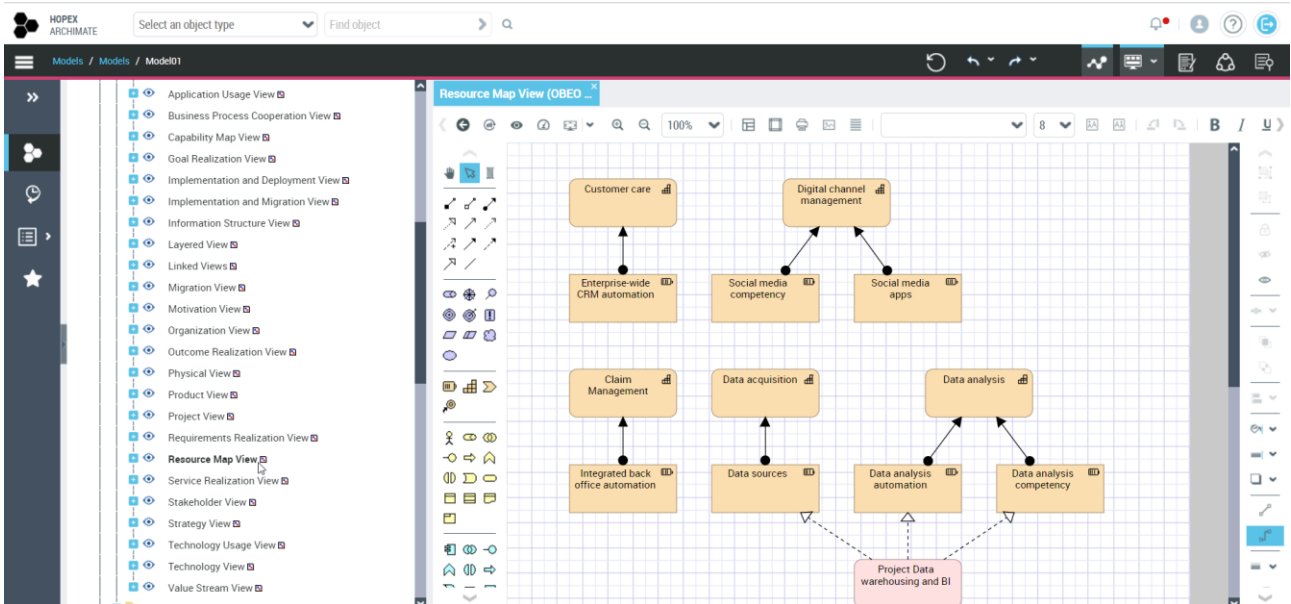
## Value Stream



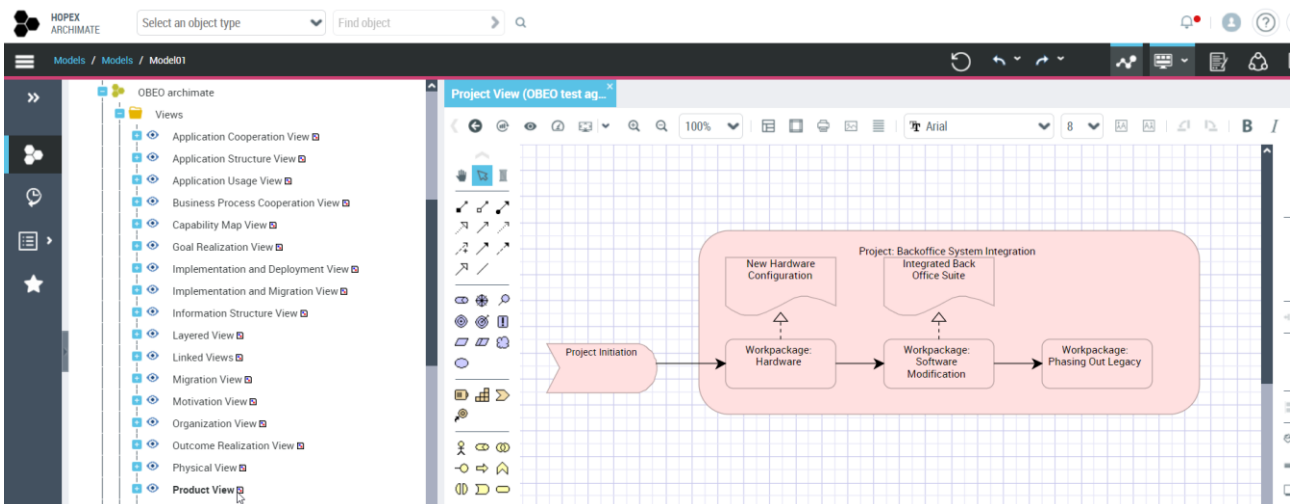
## Outcome Realization



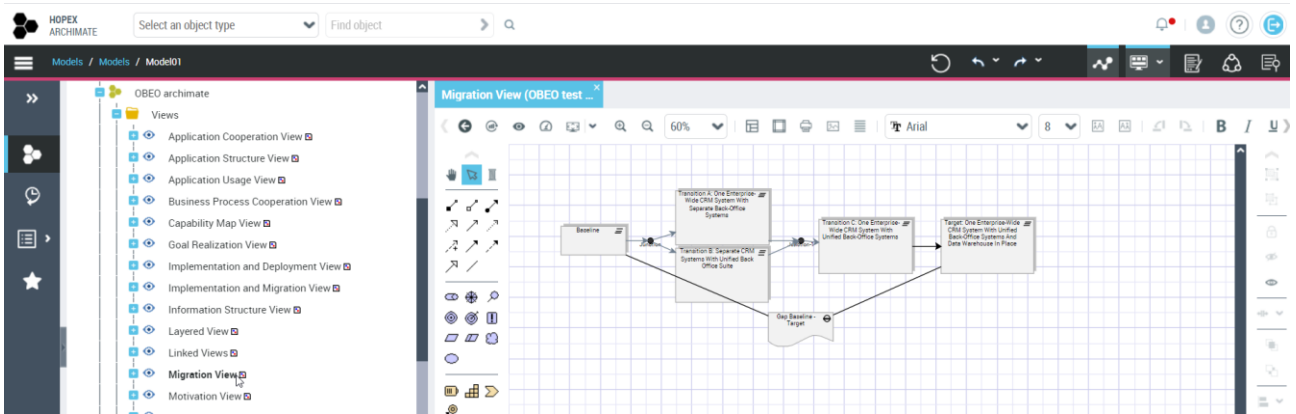
## Resource Map



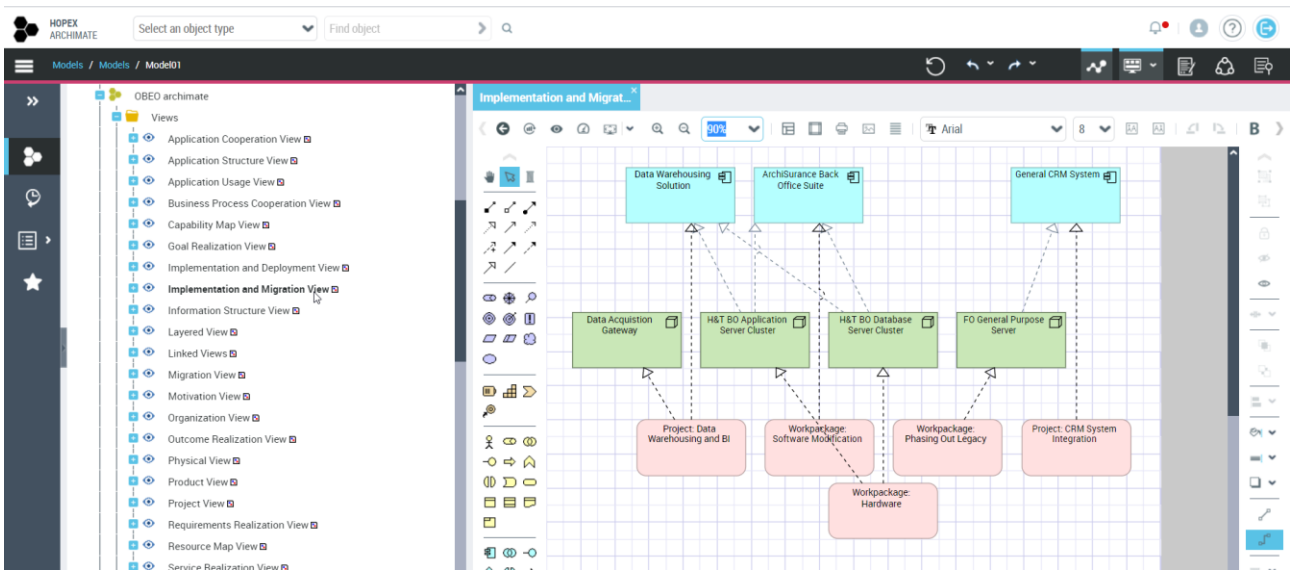
## Project



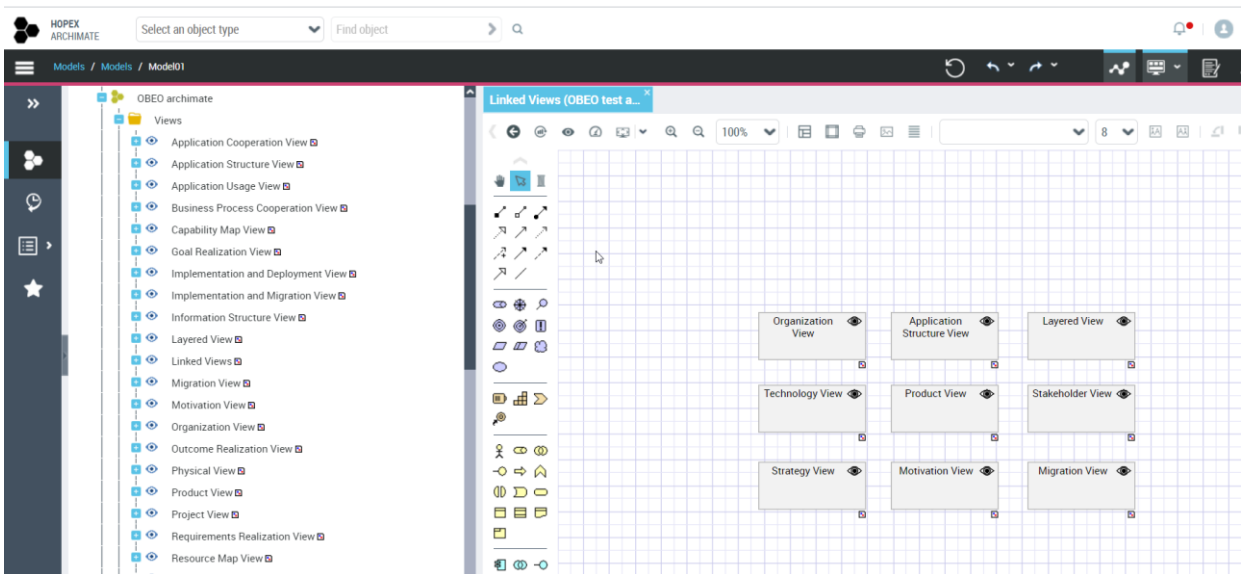
# Migration



# Implementation and Migration



# Linked Views

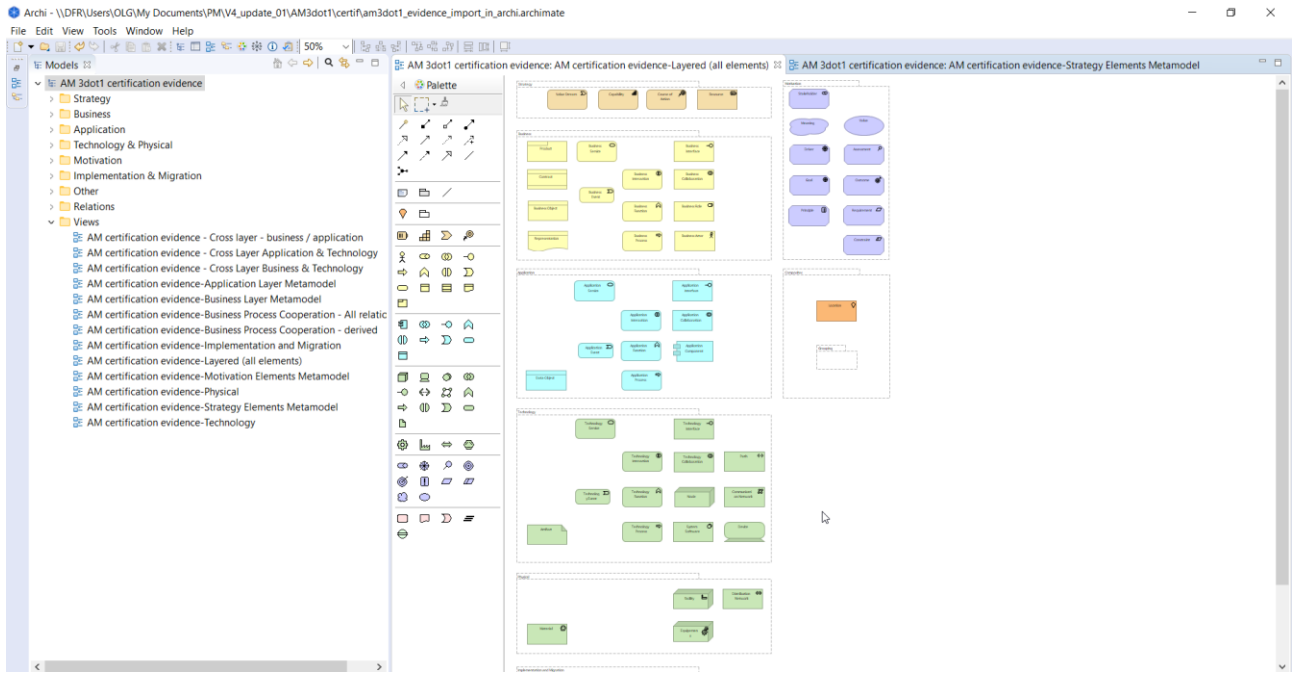


# 3. Export test to Other ArchiMate Tools

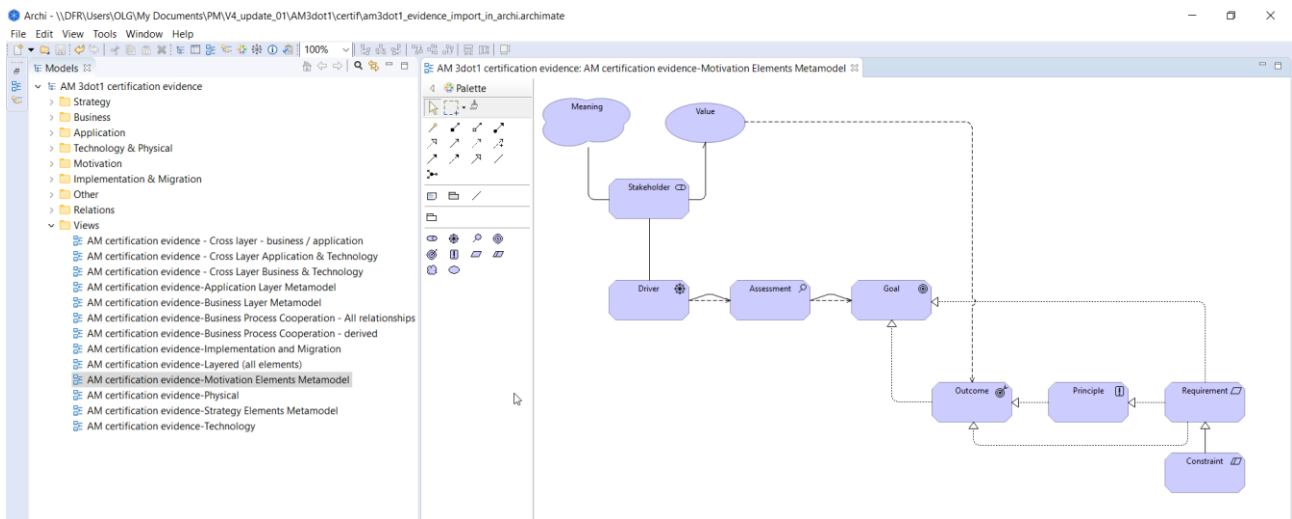
Using the provided MEGA\_International\_HOPEX\_ArchiMate\_3dot1\_certification\_evidence\_export.xml export file

## 3.1. Export to Archi 4.6

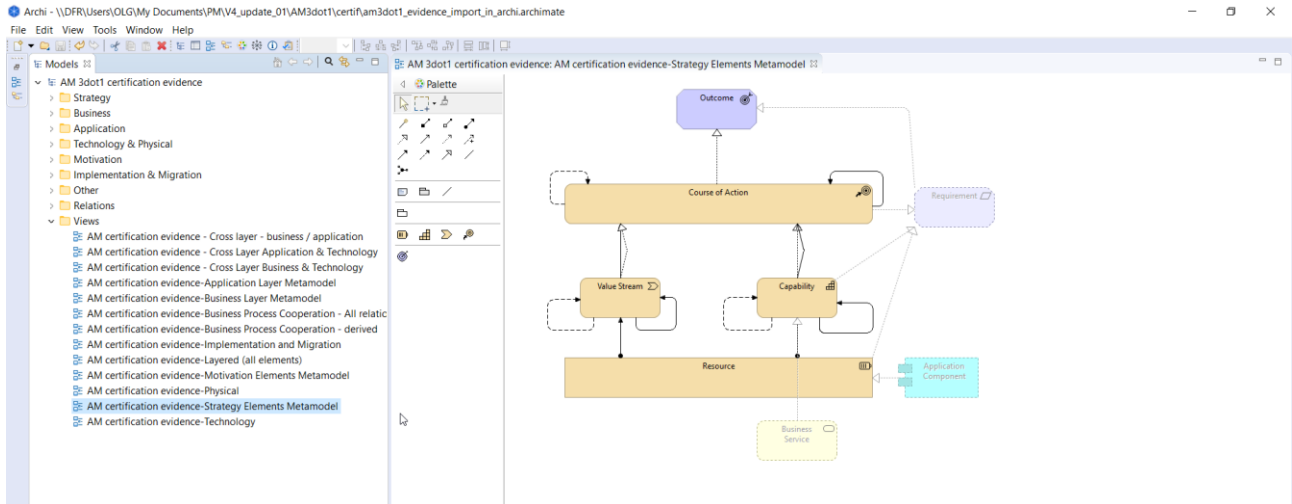
### 3.1.1. All elements



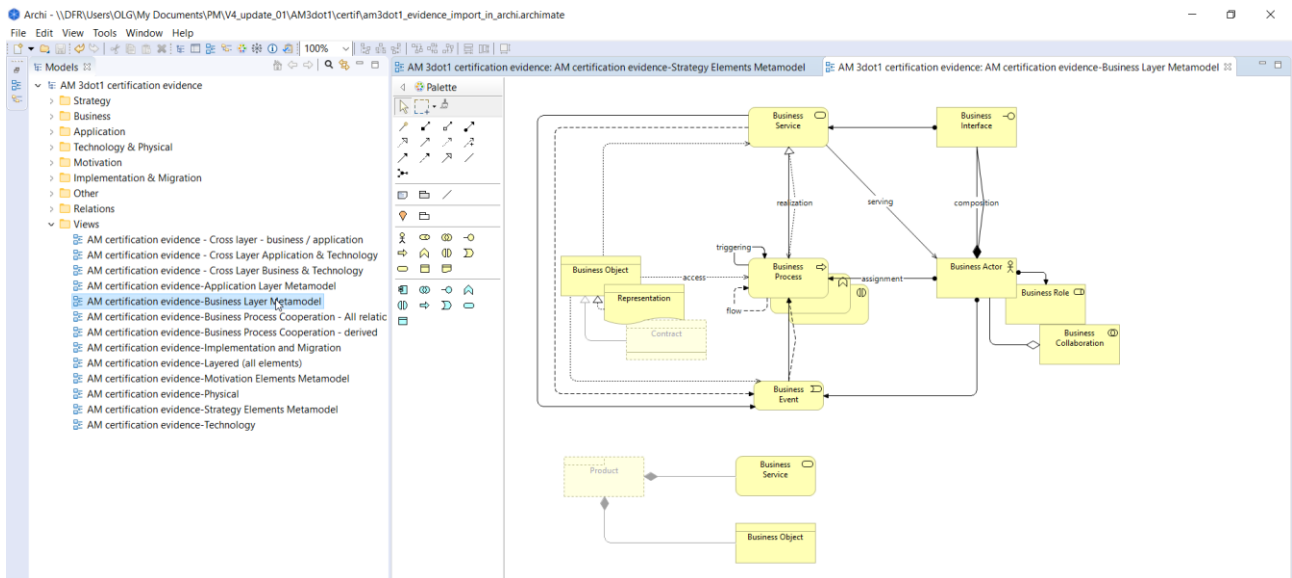
### 3.1.2. Motivation



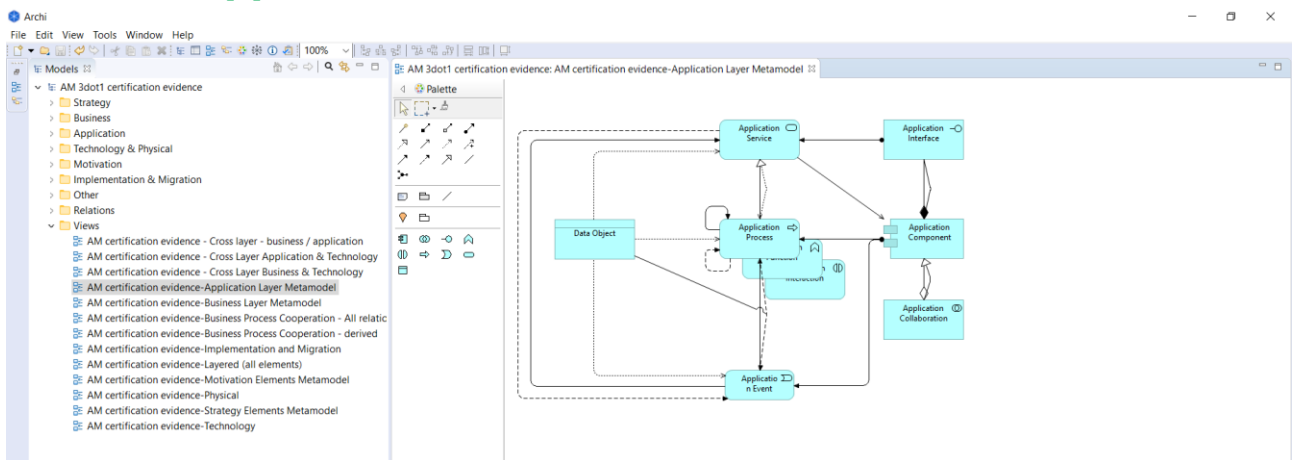
### 3.1.3. Strategy



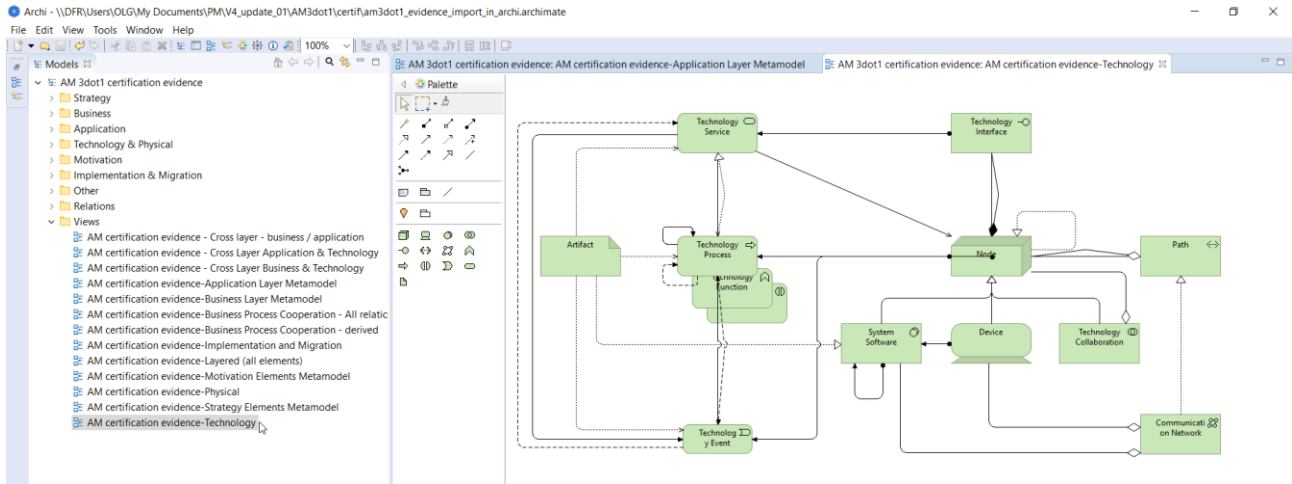
### 3.1.4. Business



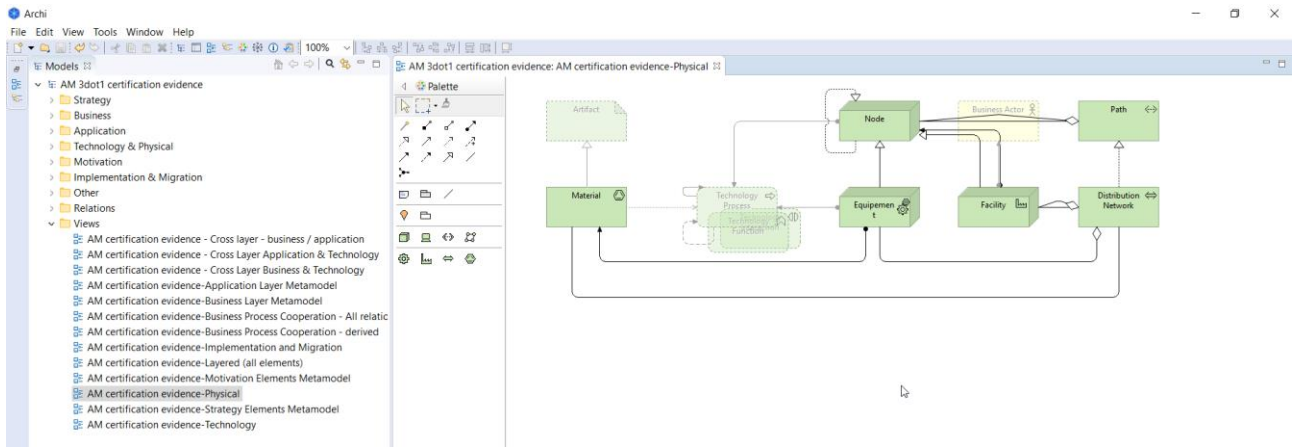
### 3.1.5. Application



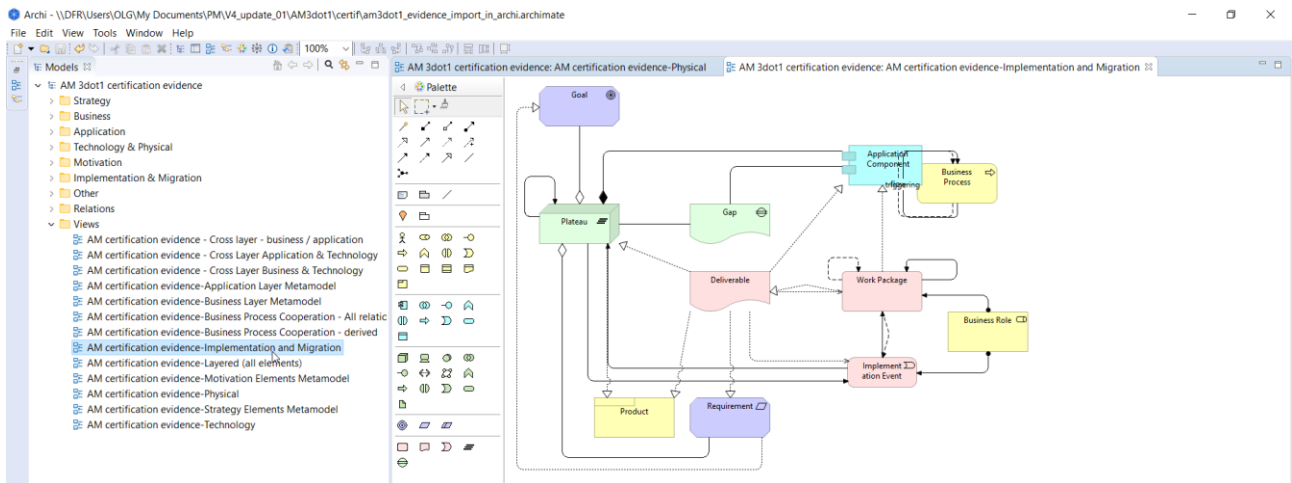
### 3.1.6. Technology



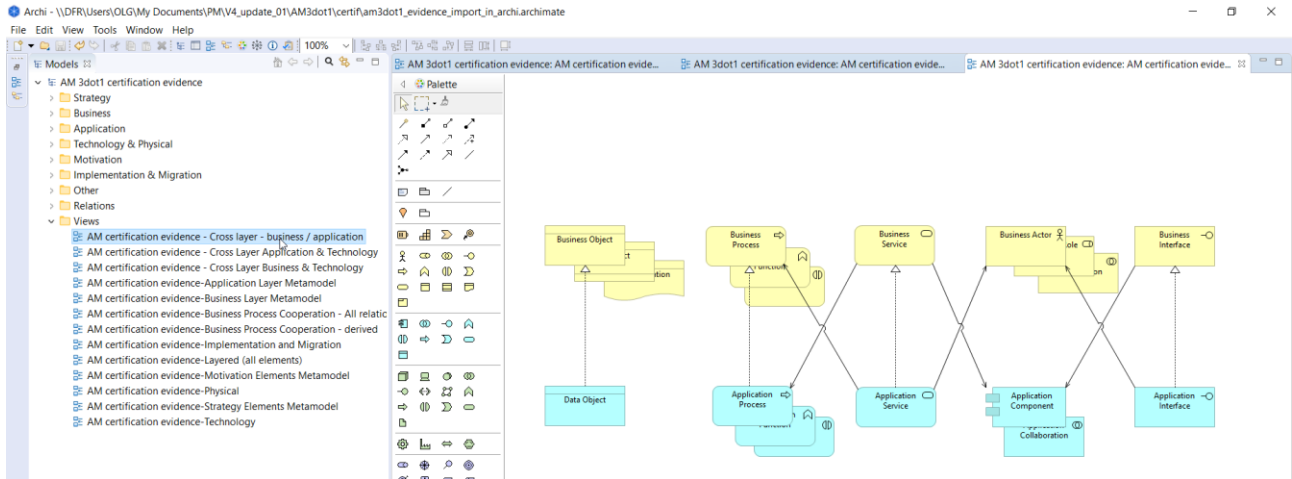
### 3.1.7. Physical



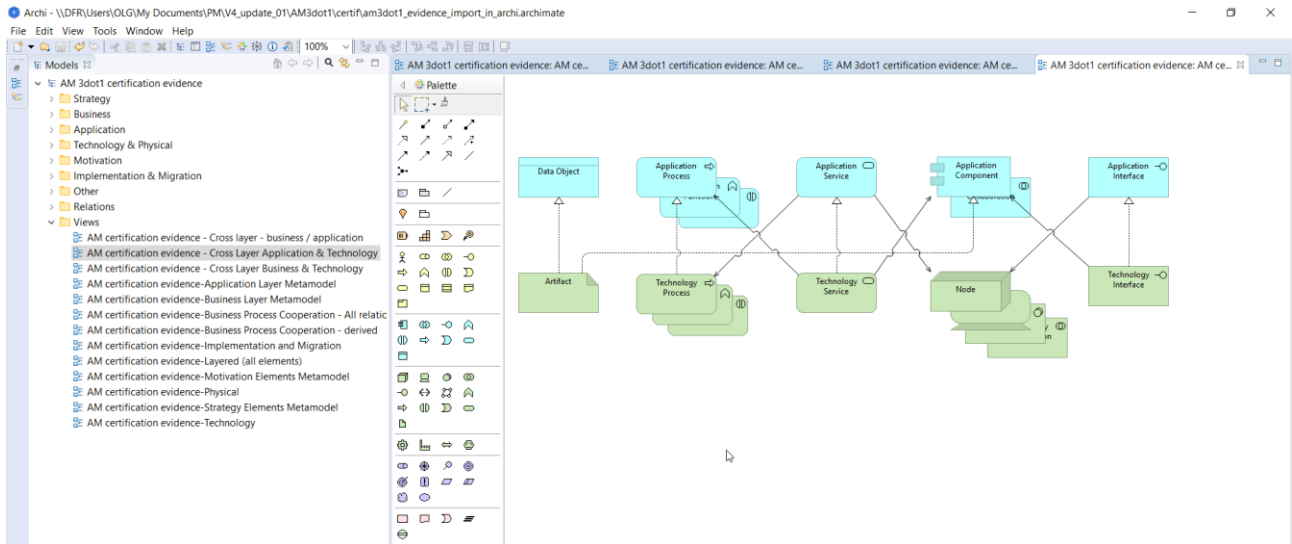
### 3.1.8. Implementation & migration



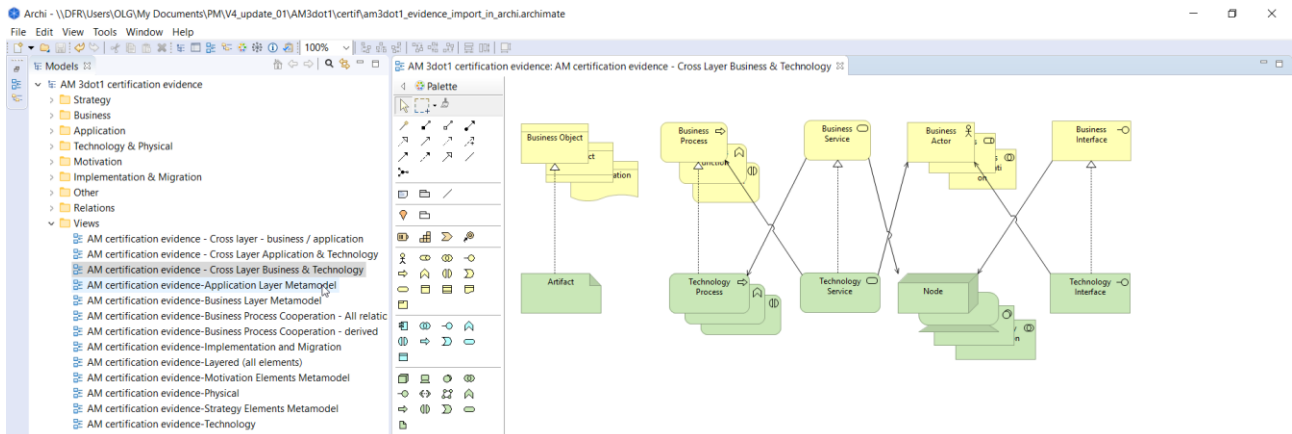
### 3.1.9. Cross layer Business / Application



### 3.1.10. Cross layer Application / Technology

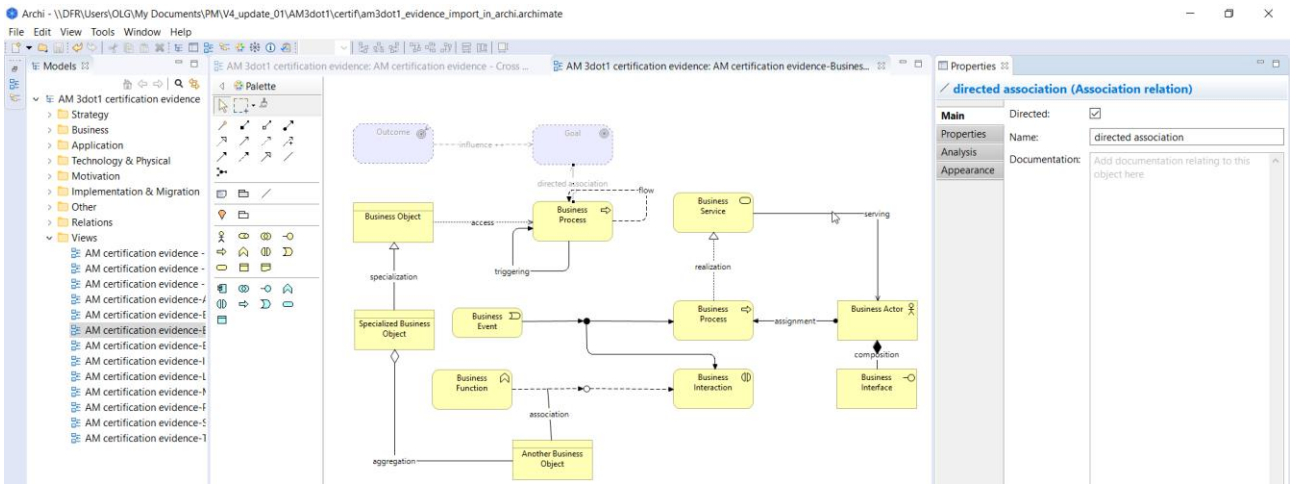


### 3.1.11. Cross Layer Business / Technology

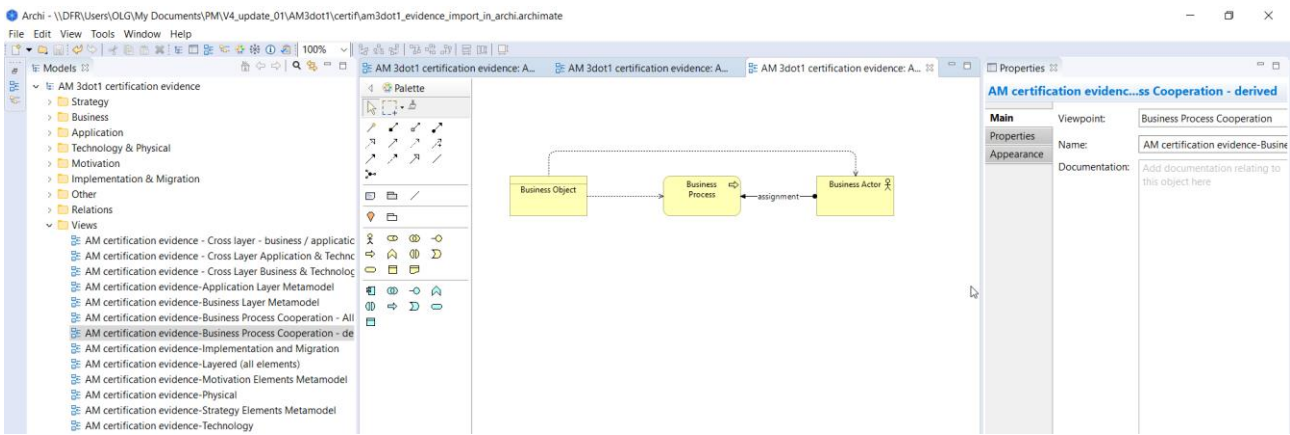


### 3.1.12. All Relationships

With directed association



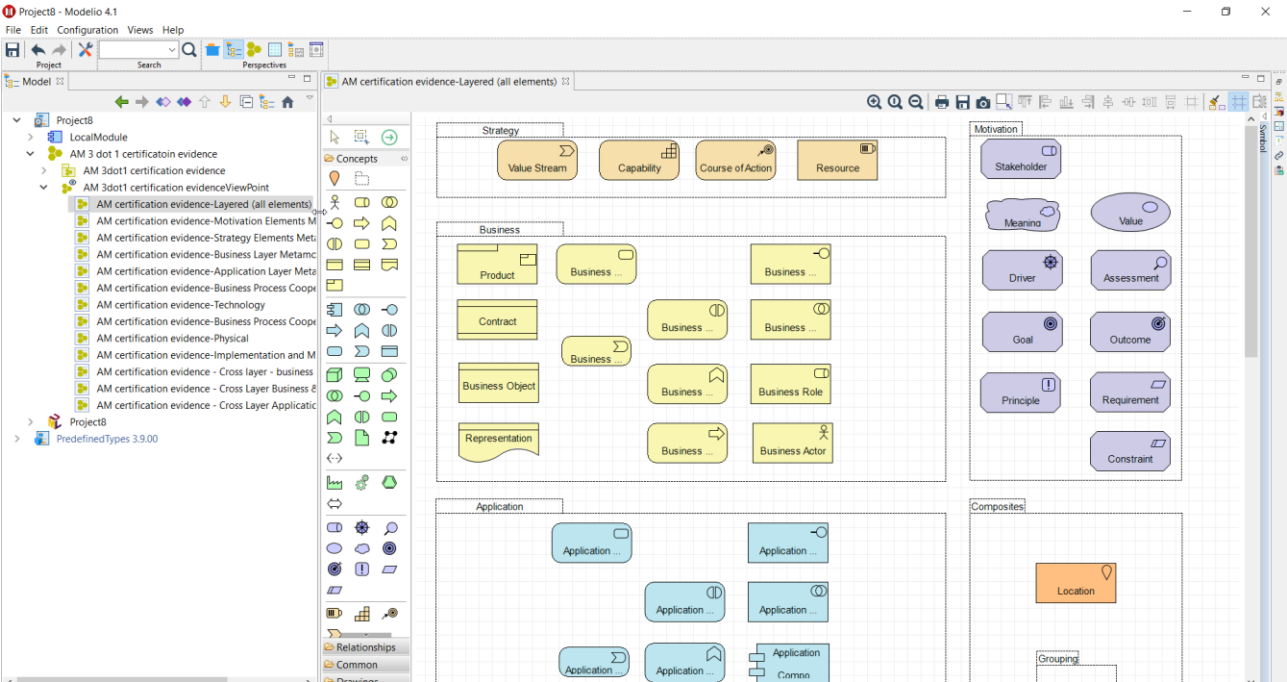
### 3.1.13. Derived Relationship



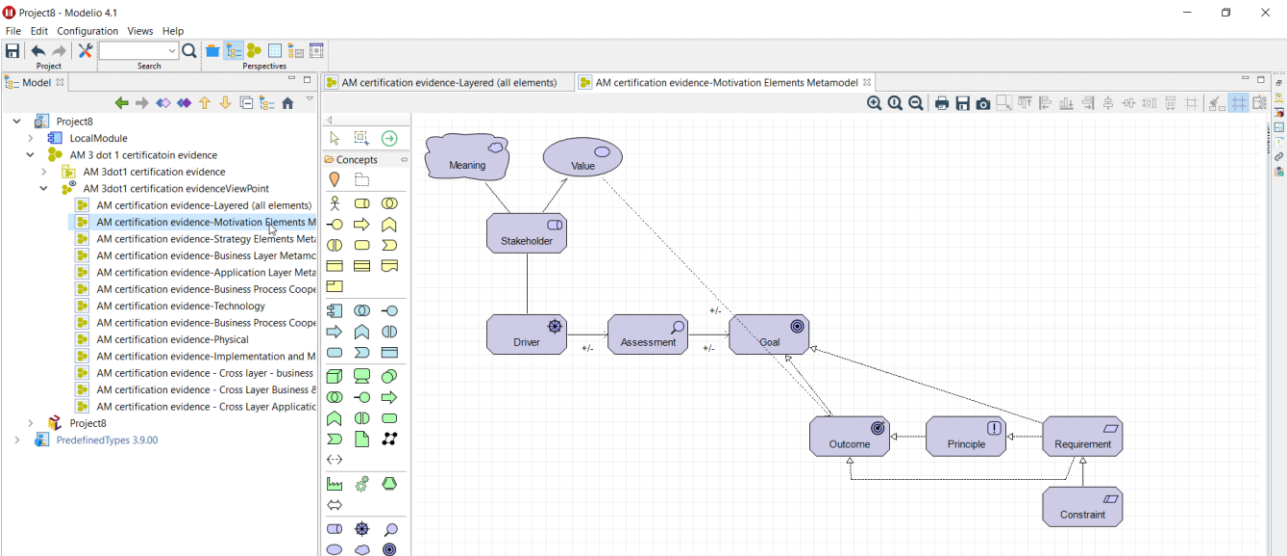


## 3.2. Export to Modelio 4.1

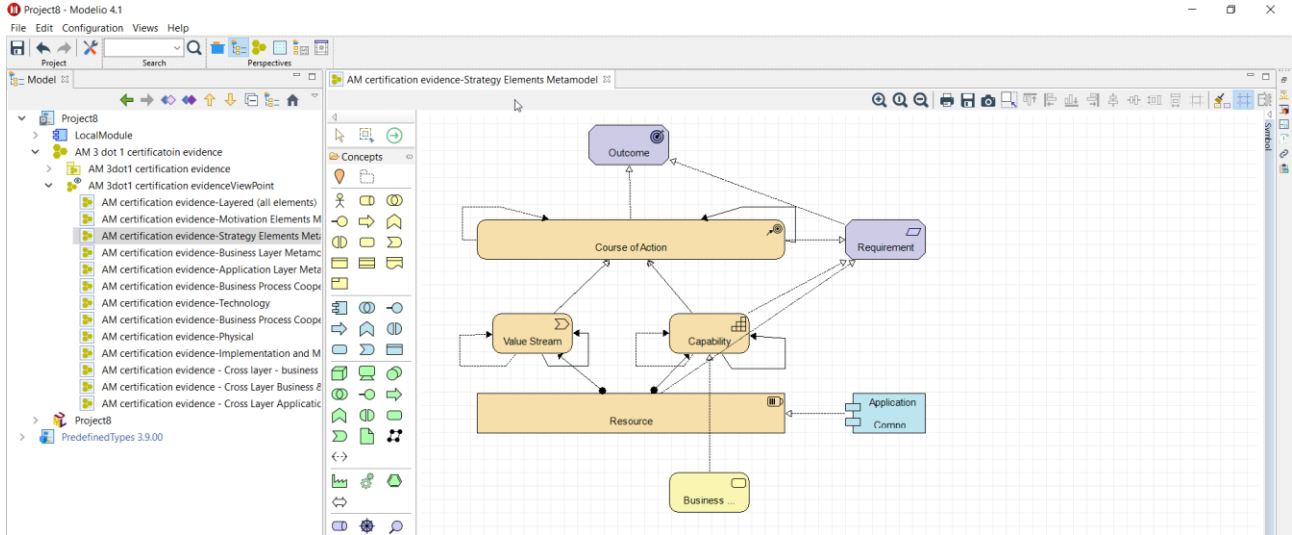
### 3.2.1. All Elements



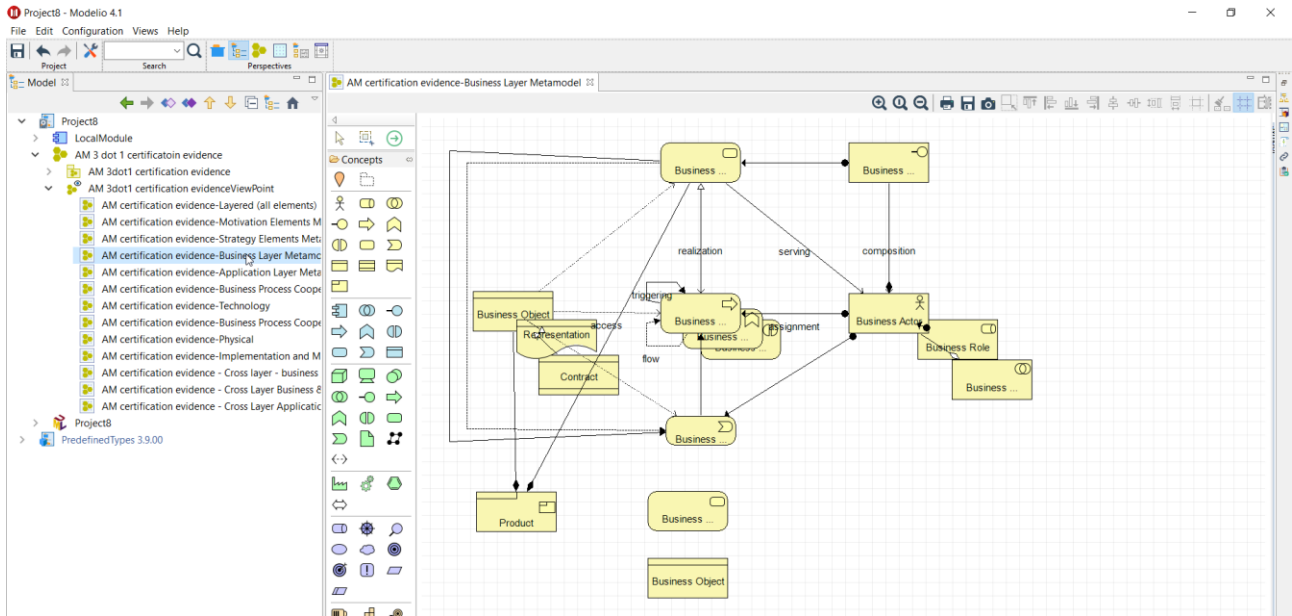
### 3.2.2. Motivation



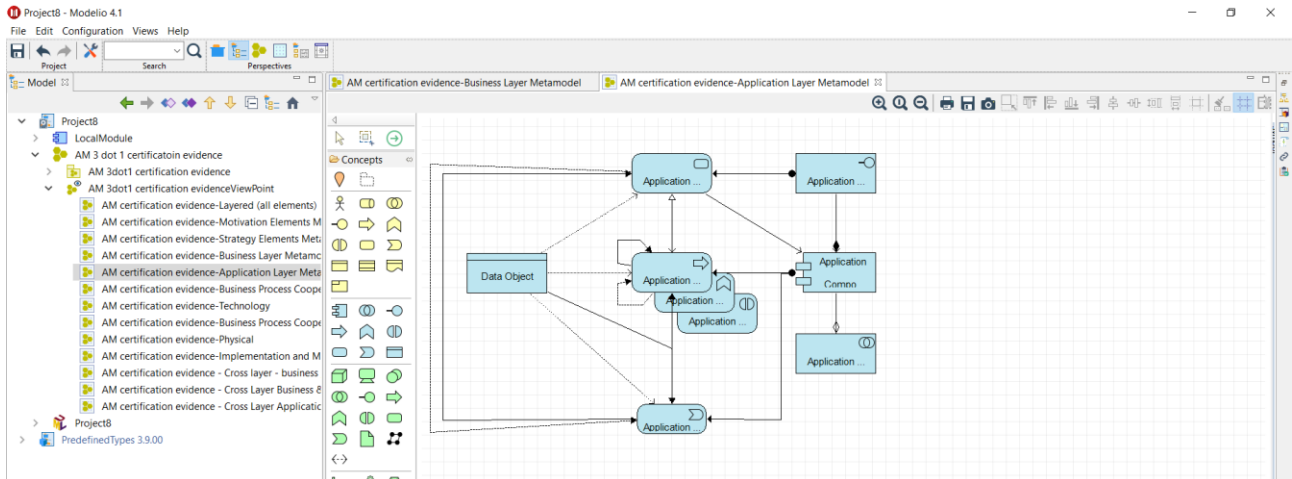
### 3.2.3. Strategy



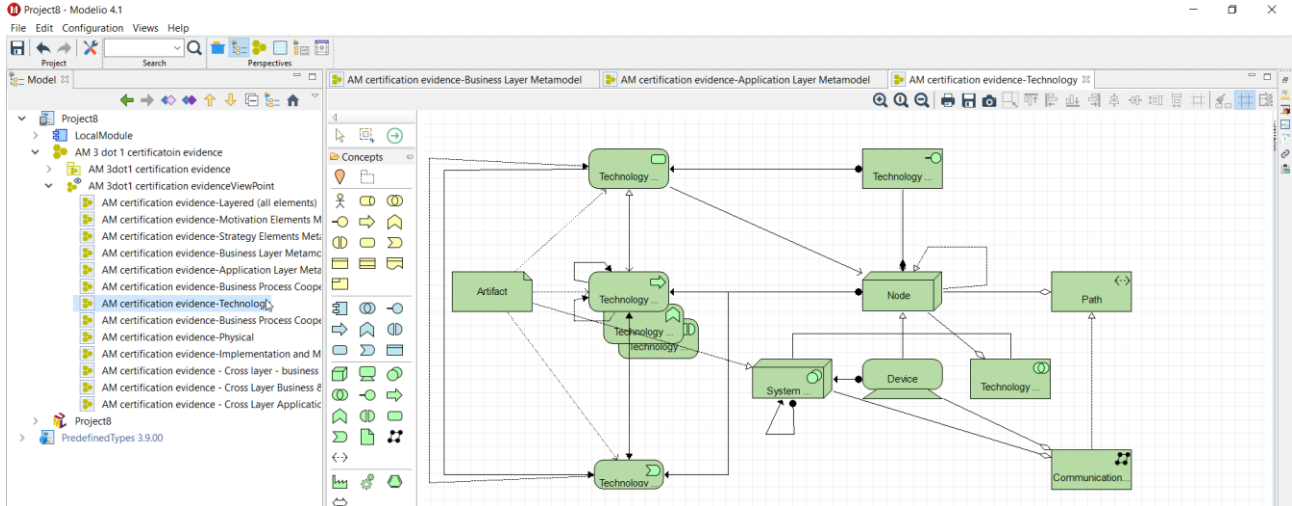
### 3.2.4. Business



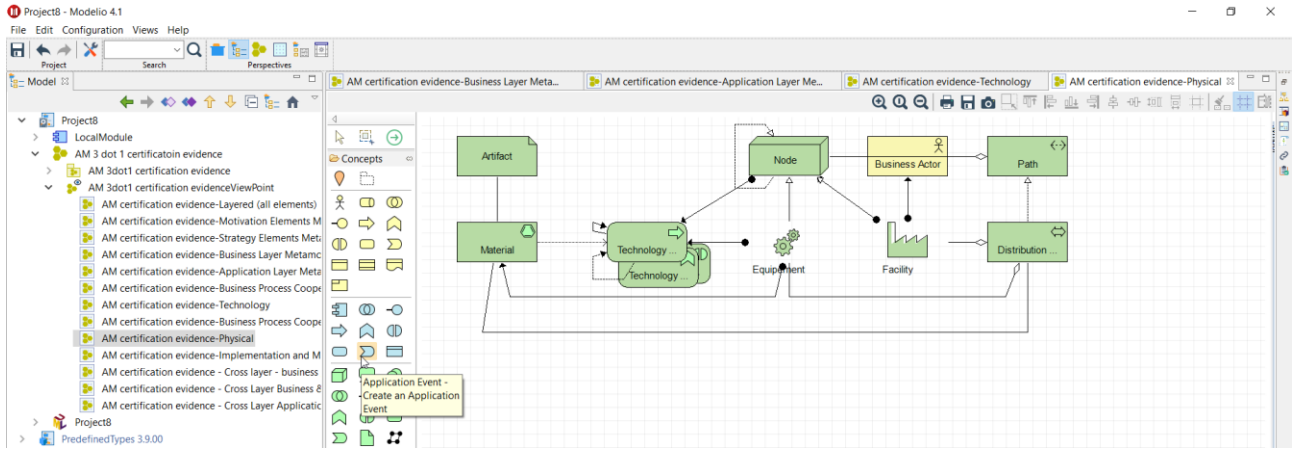
### 3.2.5. Application



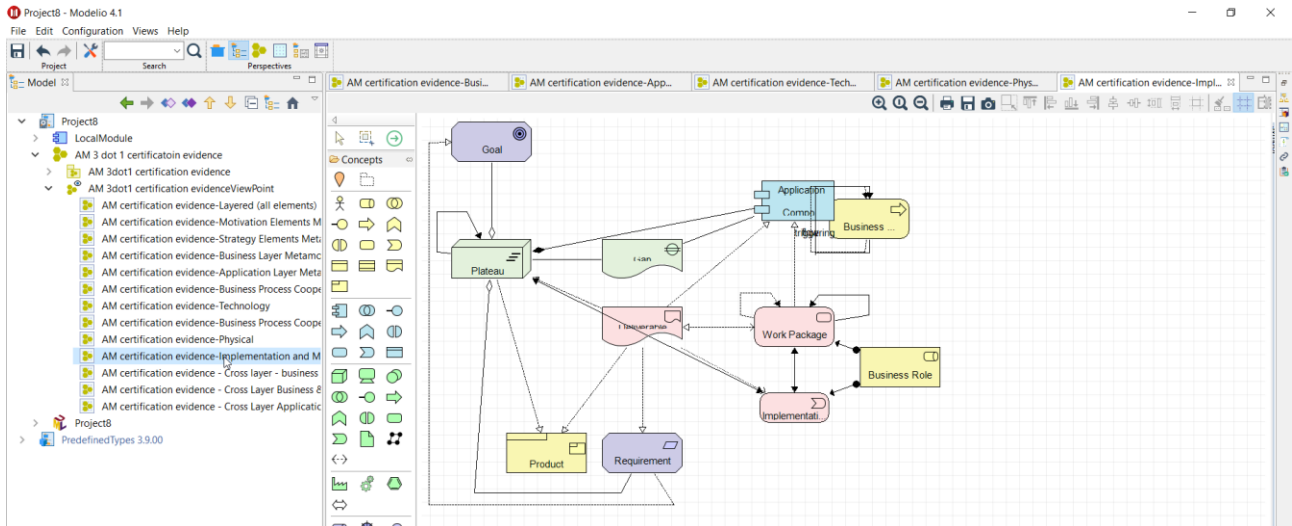
### 3.2.6. Technology



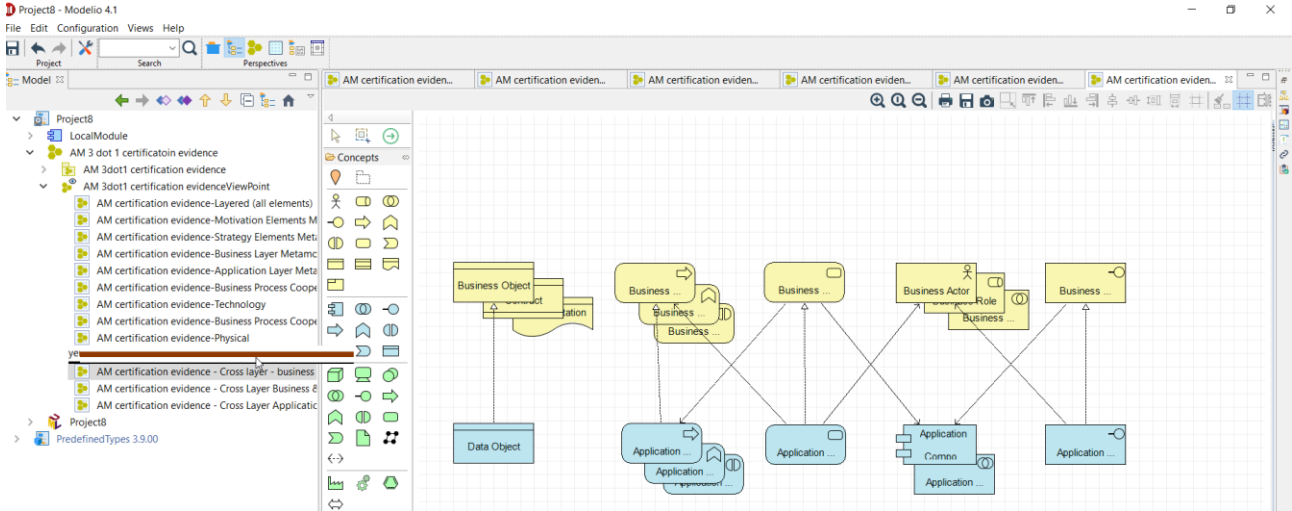
### 3.2.7. Physical



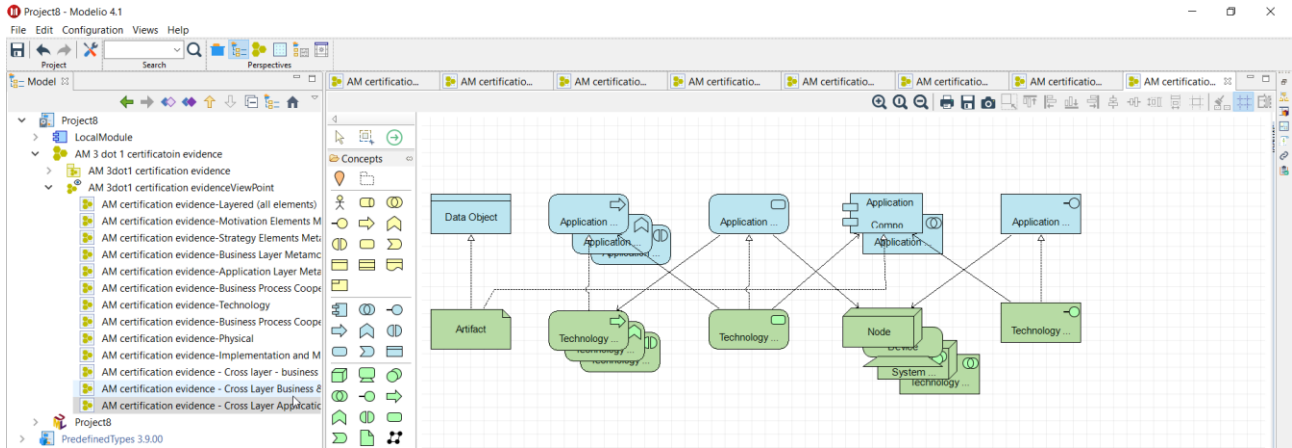
### 3.2.8. Implementation & migration



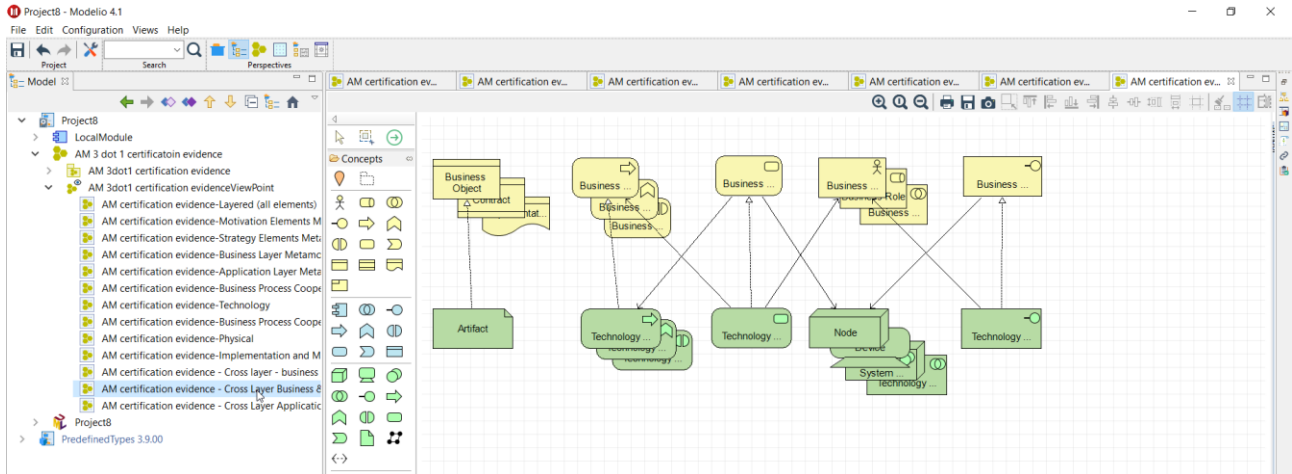
### 3.2.9. Cross layer Business / Application



### 3.2.10. Cross layer Application / Technology

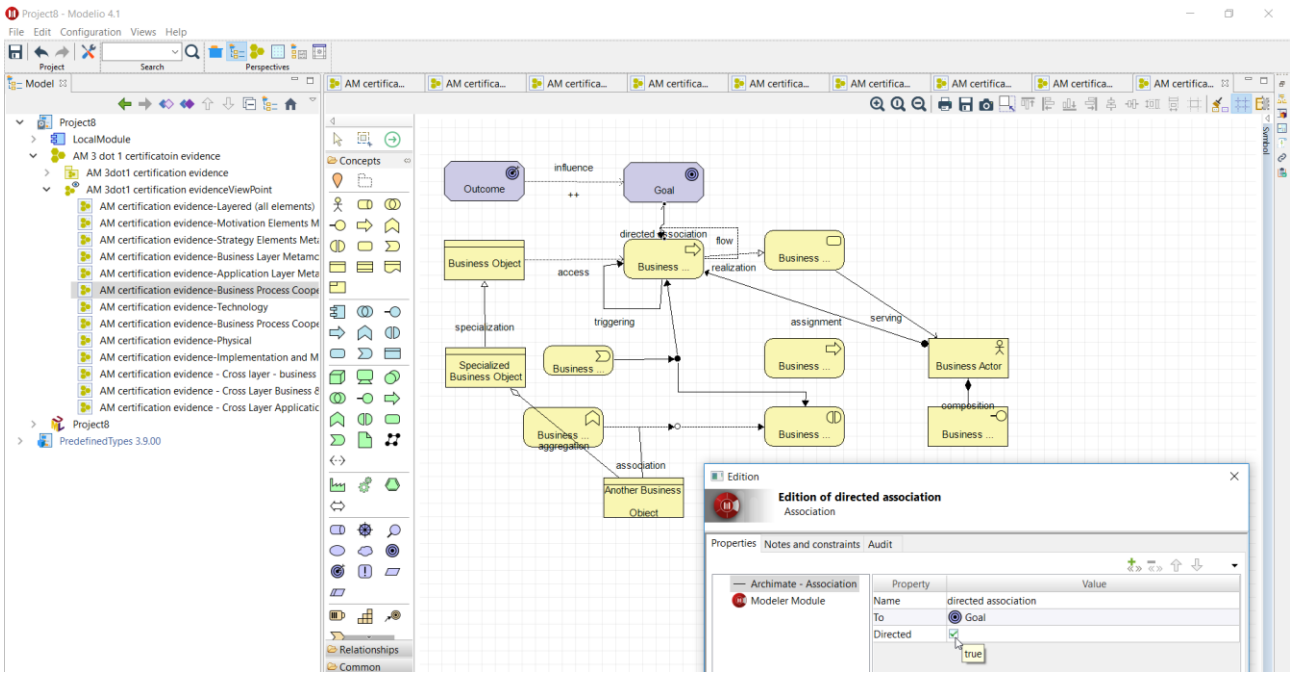


### 3.2.11. Cross Layer Business / Technology

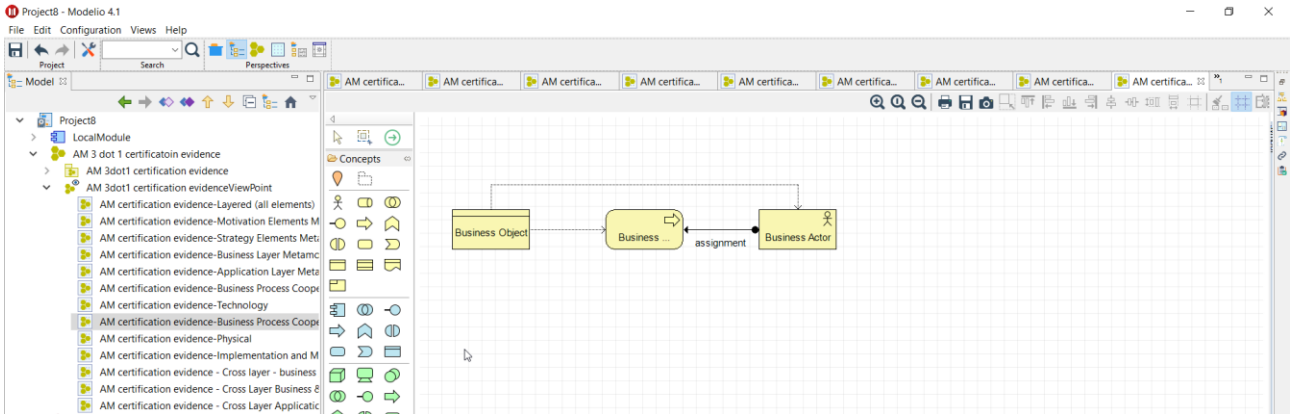


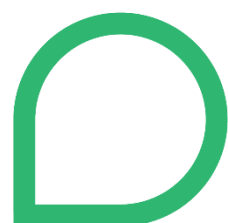
### 3.2.12. All Relationships

With directed association

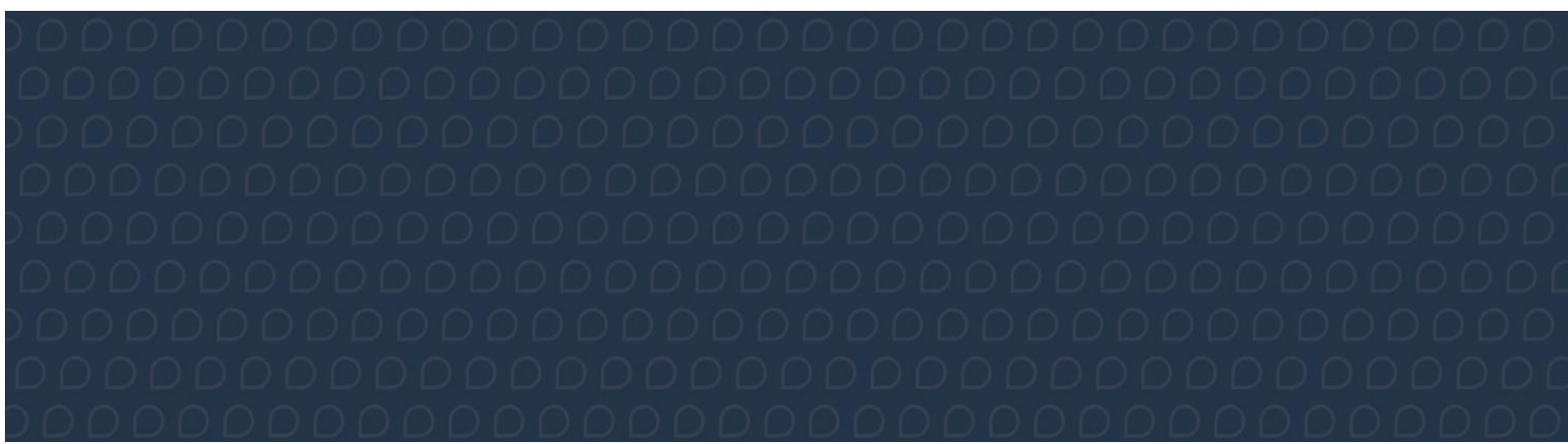


### 3.2.13. Derived Relationships





**M E G A**  
SEE THE BIGGER PICTURE



**MEGA International**

---

Headquarters: 9 avenue René Coty - 75014 Paris, France  
Phone +33 (0)1 42 75 40 00 - Fax +33 (0)1 42 75 40 95 - [www.mega.com](http://www.mega.com)